

Ankyrin B Antibody
Ankyrin B Antibody, Clone S105-13
Catalog # ASM10234

Specification

Ankyrin B Antibody - Product Information

Application	WB
Primary Accession	O01484
Other Accession	NP_001120965.1
Host	Mouse
Isotype	IgG1
Reactivity	Human, Mouse, Rat
Clonality	Monoclonal

Description

Mouse Anti-Human Ankyrin B Monoclonal IgG1

Target/Specificity

Detects ~200kDa. No cross reactivity against Ankyrin-G.

Other Names

ANK-2 Antibody, ANK2 Antibody, Ankyrin 2 Antibody, Ankyrin-2 Antibody, Ankyrin nonerythroid Antibody, Brain ankyrin Antibody, non-erythroid ankyrin Antibody, Ankyrin-B Antibody

Immunogen

Synthetic peptide amino acids 203-496 of human Ankyrin-B

Purification

Protein G Purified

Storage **-20°C**

Storage Buffer

PBS pH7.4, 50% glycerol, 0.09% sodium azide

Shipping Temperature **Blue Ice or 4°C**

Certificate of Analysis

1 µg/ml of SMC-400 was sufficient for detection of Ankyrin-B in 20 µg of rat brain lysate by colorimetric immunoblot analysis using Goat anti-mouse IgG:HRP as the secondary antibody.

Cellular Localization

Cytoplasm | Cytoskeleton | Myofibril | Sarcomere | M line | Apical Cell Membrane | Cell Membrane

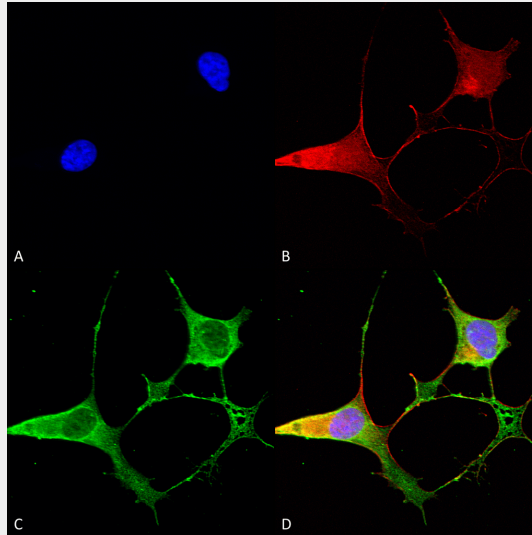
Ankyrin B Antibody - Protocols

Provided below are standard protocols that you may find useful for product applications.

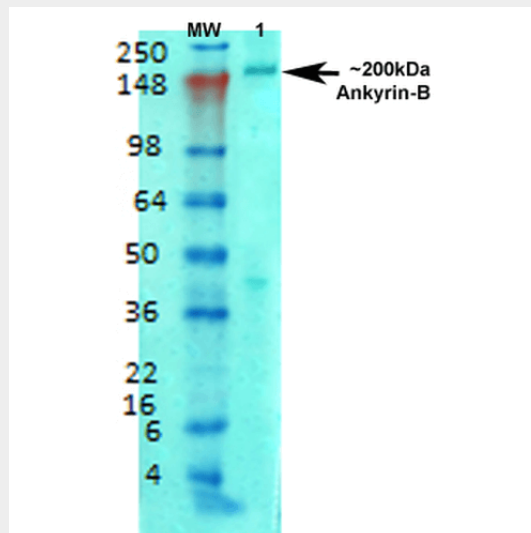
- [Western Blot](#)
- [Blocking Peptides](#)
- [Dot Blot](#)
- [Immunohistochemistry](#)

- [Immunofluorescence](#)
- [Immunoprecipitation](#)
- [Flow Cytometry](#)
- [Cell Culture](#)

Ankyrin B Antibody - Images



Immunocytochemistry/Immunofluorescence analysis using Mouse Anti-Ankyrin B Monoclonal Antibody, Clone N105/13 (ASM10234). Tissue: Neuroblastoma cells (SH-SY5Y). Species: Human. Fixation: 4% PFA for 15 min. Primary Antibody: Mouse Anti-Ankyrin B Monoclonal Antibody (ASM10234) at 1:50 for overnight at 4°C with slow rocking. Secondary Antibody: AlexaFluor 488 at 1:1000 for 1 hour at RT. Counterstain: Phalloidin-iFluor 647 (red) F-Actin stain; Hoechst (blue) nuclear stain at 1:800, 1.6mM for 20 min at RT. (A) Hoechst (blue) nuclear stain. (B) Phalloidin-iFluor 647 (red) F-Actin stain. (C) Ankyrin B Antibody (D) Composite.



Nucleus. Magnification: 60X. (A) DAPI (blue) nuclear stain. (B) Phalloidin Texas Red F-Actin stain. (C) Ankyrin B Antibody. (D) Composite.

Ankyrin B Antibody - Background

Ankyrins are a family of adaptor proteins that mediate the attachment of integral membrane proteins to the spectrin-actin based membrane skeleton (1). Ankyrins have binding sites for the

beta subunit of spectrin and at least 12 families of integral membrane proteins. This linkage is required to maintain the integrity of the plasma membranes and to anchor specific ion channels, ion exchangers and ion transporters in the plasma membrane.

Ankyrin B Antibody - References

1. Bennett V., Baines A.J. (2001) *Physiol. Rev.* 81 (3): 1353-92.