

A24252

Leader in Biomolecular Solutions for Life Science



PE Rabbit anti-Mouse ICOS/CD278 mAb

Catalog No.: A24252

Basic Information

Observed MW

Calculated MW

22kDa

Category

SMab Recombinant Monoclonal
Antibody

Applications

FC

Cross-Reactivity

Mouse

CloneNo number

ARC62050-PE

Conjugate

PE. Ex:565nm. Em:574nm.

Recommended Dilutions

FC 5 μ l per 10^6 cells in
100 μ l volume

Contact



www.abclonal.com

Background

Predicted to be involved in T cell costimulation; T cell tolerance induction; and cell-cell adhesion. Located in external side of plasma membrane. Is integral component of plasma membrane. Used to study common variable immunodeficiency. Human ortholog(s) of this gene implicated in celiac disease; common variable immunodeficiency; and immunoglobulin alpha deficiency. Orthologous to human ICOS (inducible T cell costimulator).

Immunogen Information

Gene ID

54167

Swiss Prot

Q9WVS0

Immunogen

Recombinant fusion protein containing a sequence corresponding to amino acids 21-142 of Mouse ICOS/CD278(NP_059508.2).

Synonyms

H4; CCLP; AILIM; CRP-1; Ly115

Product Information

Source

Rabbit

Isotype

IgG

Purification

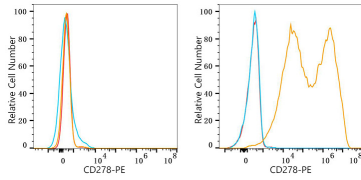
Affinity purification

Storage

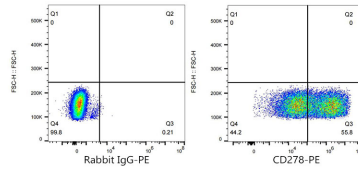
Store at 2-8°C. Avoid freeze.

Buffer: PBS with 0.03% proclin300,0.2% BSA,pH7.3.

Validation Data



Flow cytometry: 1×10^6 CHO cells (negative control, left) and CHO (Transfection, right) were surface-stained with PE Rabbit anti-Mouse ICOS/CD278 mAb (A24252, 5 μ l/Test, orange line) or PE Rabbit IgG isotype control (5 μ l/Test, blue line). Non-fluorescently stained cells were used as blank control (red line).



Flow cytometry: 1×10^6 CHO (Transfection) cells were surface-stained with PE Rabbit IgG isotype control (5 μ l/Test, left) or PE Rabbit anti-Mouse ICOS/CD278 mAb (A24252, 5 μ l/Test, right).