

A10098

Leader in Biomolecular Solutions for Life Science



COX IV Mouse mAb

Catalog No.: A10098 **6 Publications**

Basic Information

Observed MW

17kDa

Calculated MW

20kDa

Category

SMab Recombinant Monoclonal Antibody

Applications

WB,IHC-P,IF/ICC,IP,FC,ELISA

Cross-Reactivity

Human,Mouse,Rat,Hamster,Monkey,Goat

Background

Cytochrome c oxidase (COX) is the terminal enzyme of the mitochondrial respiratory chain. It is a multi-subunit enzyme complex that couples the transfer of electrons from cytochrome c to molecular oxygen and contributes to a proton electrochemical gradient across the inner mitochondrial membrane. The complex consists of 13 mitochondrial- and nuclear-encoded subunits. The mitochondrially-encoded subunits perform the electron transfer and proton pumping activities. The functions of the nuclear-encoded subunits are unknown but they may play a role in the regulation and assembly of the complex. This gene encodes the nuclear-encoded subunit IV isoform 1 of the human mitochondrial respiratory chain enzyme. It is located at the 3' of the NOC4 (neighbor of COX4) gene in a head-to-head orientation, and shares a promoter with it. Pseudogenes related to this gene are located on chromosomes 13 and 14. Alternative splicing results in multiple transcript variants encoding different isoforms.

Recommended Dilutions

WB	1:1000 - 1:4000
IHC-P	1:50 - 1:200
IF/ICC	1:50 - 1:200
IP	1:20 - 1:50
FC	1:20 - 1:50

Immunogen Information

Gene ID

1327

Swiss Prot

P13073

Immunogen

A synthetic peptide of human COX IV

Synonyms

COX4; COXIV; COX4-1; COXIV-1; MC4DN16; COX IV-1; COX IV

Contact



www.abclonal.com

Product Information

Source

Mouse

Isotype

IgG

Purification

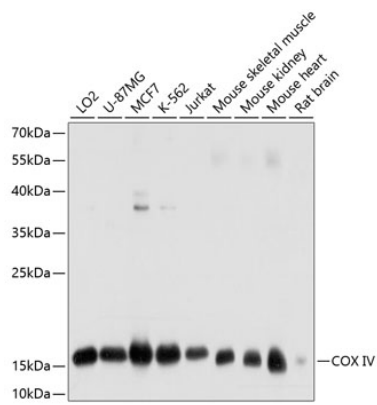
Affinity purification

Storage

Store at -20°C. Avoid freeze / thaw cycles.

Buffer: PBS with 0.02% sodium azide,50% glycerol,pH7.3.

Validation Data



Western blot analysis of various lysates using COX IV Mouse mAb (A10098) at 1:1000 dilution.
Secondary antibody: HRP Goat Anti-Mouse IgG (H+L) (AS003) at 1:10000 dilution.
Lysates/proteins: 25µg per lane.
Blocking buffer: 3% nonfat dry milk in TBST.
Detection: ECL Basic Kit (RM00020).
Exposure time: 30s.