

A23593

Leader in Biomolecular Solutions for Life Science



PE Rabbit anti-Human CD209/DC-SIGN mAb

Catalog No.: A23593

Basic Information

Observed MW

Calculated MW

4kDa/18kDa/30kDa/33kDa/35kDa/37kDa/41kDa/43kDa/45kDa

Category

SMab Recombinant Monoclonal Antibody

Applications

FC

Cross-Reactivity

Human

CloneNo number

ARC60195-PE

Conjugate

PE. Ex:565nm. Em:574nm.

Recommended Dilutions

FC 5 μ l per 10^6 cells in 100 μ l volume

Contact



www.abclonal.com

Background

This gene encodes a C-type lectin that functions in cell adhesion and pathogen recognition. This receptor recognizes a wide range of evolutionarily divergent pathogens with a large impact on public health, including leprosy and tuberculosis mycobacteria, the Ebola, hepatitis C, HIV-1 and Dengue viruses, and the SARS-CoV acute respiratory syndrome coronavirus. The protein is organized into four distinct domains: a C-terminal carbohydrate recognition domain, a flexible tandem-repeat neck domain, a transmembrane region and an N-terminal cytoplasmic domain involved in internalization. This gene is closely related in terms of both sequence and function to a neighboring gene, CLEC4M (Gene ID: 10332), also known as L-SIGN. The two genes differ in viral recognition and expression patterns, with this gene showing high expression on the surface of dendritic cells. Polymorphisms in the neck region are associated with protection from HIV-1 infection, while single nucleotide polymorphisms in the promoter of this gene are associated with differing resistance and susceptibility to and severity of infectious disease, including rs4804803, which is associated with SARS severity.

Immunogen Information

Gene ID	Swiss Prot
30835	Q9NNX6

Immunogen

Recombinant fusion protein containing a sequence corresponding to amino acids 59-404 of human CD209/DC-SIGN (NP_066978.1).

Synonyms

CDSIGN; CLEC4L; DC-SIGN; DC-SIGN1; hDC-SIGN

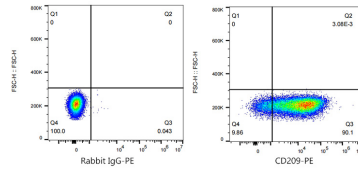
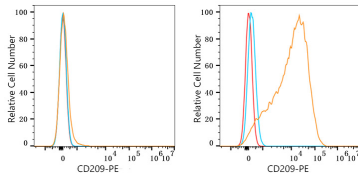
Product Information

Source	Isotype	Purification
Rabbit	IgG	Affinity purification

Storage

Store at 2-8°C. Avoid freeze.
Buffer: PBS with 0.03% proclin300,0.2% BSA,pH7.3.

Validation Data



Flow cytometry: 1×10^6 293F cells (negative control, left) and THP-1 cells (right) were surface-stained with PE Rabbit anti-Human CD209/DC-SIGN mAb (A23593, 5 µl/Test, orange line) or PE Rabbit IgG isotype control (5 µl/Test, blue line). Non-fluorescently stained cells were used as blank control (red line).

Flow cytometry: 1×10^6 THP-1 cells were surface-stained with PE Rabbit IgG isotype control (5 µl/Test, left) or PE Rabbit anti-Human CD209/DC-SIGN mAb (A23593, 5 µl/Test, right).