

**NRF2 Antibody**  
Catalog # ASM10564

**Specification**

---

**NRF2 Antibody - Product Information**

Application	<b>WB</b>
Primary Accession	<a href="#">Q16236</a>
Other Accession	<a href="#">NP_001138884.1</a>
Host	<b>Rabbit</b>
Reactivity	<b>Human</b>
Clonality	<b>Polyclonal</b>

**Description**

Rabbit Anti-Human NRF2 Polyclonal

**Target/Specificity**

Detects ~67.8 kDa.

**Other Names**

Nuclear factor erythroid 2-related factor 2 Antibody, Nrf 2 Antibody, Nuclear factor Antibody, NF2L2\_HUMAN Antibody, Nfe2l2 Antibody, Nuclear factor erythroid 2 related factor 2 Antibody, nuclear factor erythroid 2 like 2 Antibody, Nuclear factor (erythroid derived 2) like 2 Antibody, NRF2 Antibody, like 2 Antibody, NF-E2-related factor 2 Antibody, NFE2-related factor 2 Antibody, erythroid derived 2, Nuclear factor, NFE2L2 Antibody, HEBP1 Antibody, NFE2 related factor 2 Antibody, NF E2 related factor 2 Antibody, Nuclear factor erythroid derived 2 like 2 Antibody, erythroid derived 2 Antibody

**Immunogen**

Synthetic peptide from the mid-protein of Human NRF2

**Purification**

Peptide Affinity Purified

Storage **-20°C**

**Storage Buffer**

PBS, 50% glycerol, 0.09% sodium azide

Shipping Temperature **Blue Ice or 4°C**

**Certificate of Analysis**

A 1:1000 dilution of SPC-711 was sufficient for detection of NRF2 in 15 µg of human HeLa cell lysates by ECL immunoblot analysis using goat anti-rabbit IgG:HRP as the secondary antibody.

**Cellular Localization**

Cytoplasm | Cytosol | Nucleus

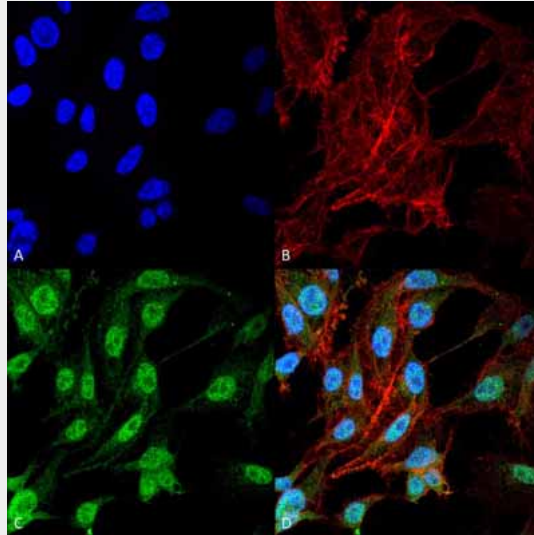
**NRF2 Antibody - Protocols**

Provided below are standard protocols that you may find useful for product applications.

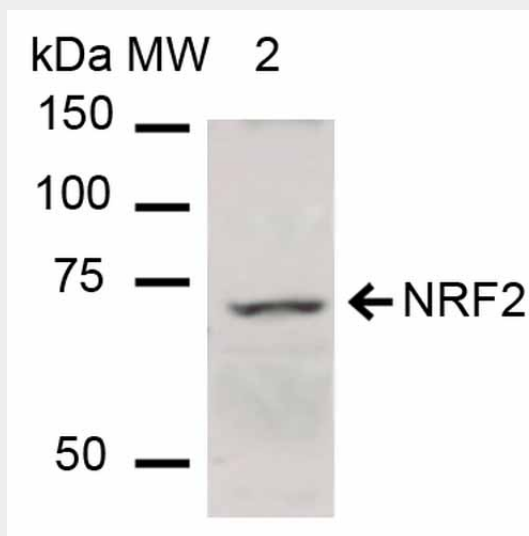
- [Western Blot](#)

- [Blocking Peptides](#)
- [Dot Blot](#)
- [Immunohistochemistry](#)
- [Immunofluorescence](#)
- [Immunoprecipitation](#)
- [Flow Cytometry](#)
- [Cell Culture](#)

### NRF2 Antibody - Images



Immunocytochemistry/Immunofluorescence analysis using Rabbit Anti-NRF2 Polyclonal Antibody (ASM10564). Tissue: Colon carcinoma cell line (RKO). Species: Human. Fixation: 4% Formaldehyde for 15 min at RT. Primary Antibody: Rabbit Anti-NRF2 Polyclonal Antibody (ASM10564) at 1:100 for 60 min at RT. Secondary Antibody: Goat Anti-Rabbit ATTO 488 at 1:100 for 60 min at RT. Counterstain: Phalloidin Texas Red F-Actin stain; DAPI (blue) nuclear stain at 1:1000, 1:5000 for 60 min at RT, 5 min at RT. Localization: Cytoplasm, Cytosol, Nucleus. Magnification: 60X. (A) DAPI nuclear stain. (B) Phalloidin Texas Red F-Actin stain. (C) NRF2 Antibody. (D) Composite.



Western blot analysis of Human HeLa cell lysates showing detection of ~67.8 kDa NRF2 protein using Rabbit Anti-NRF2 Polyclonal Antibody (ASM10564). Lane 1: Molecular Weight Ladder (MW). Lane 2: HeLa cell lysates. Load: 15 µg. Block: 5% Skim Milk in 1X TBST. Primary Antibody: Rabbit

Anti-NRF2 Polyclonal Antibody (ASM10564) at 1:1000 for 2 hours at RT. Secondary Antibody: Goat Anti-Rabbit IgG: HRP at 1:2000 for 60 min at RT. Color Development: ECL solution for 6 min in RT. Predicted/Observed Size: ~67.8 kDa.