

## Anti-Rad18 (human) antibody, rabbit polyclonal IgG

70-023 100 ug

The Rad6-Rad18 pair of genes plays a critical role in post-replication repair of damaged DNA. Rad6 protein functions as an E2 enzyme and Rad18 as an ubiquitine ligase (E3) which ubiquitinates PCNA. Rad18 recruits translesion DNA polymerases to damaged DNA (ref 1~3).

### Applications: (see Ref 1~3)

- 1) Western blotting (1,000 fold dilution)
- 2) Indirect immunofluorescence staining
- 3) Immunoprecipitation

**Immunogen:** GST-fusion protein containing 113 carboxyl terminal of human Rad18

**Reactivity:** Human Rad18. Not reactive to mouse Rad18

**Antibody:** Polyclonal rabbit IgG fraction pre-adsorbed with GST affinity column

1mg/ml in PBS, 50% glycerol, 0.09% sodium azide

**Storage:** -20°C

**Data Link:** UniProtKB/TrEMBL [C9J0Q4](#) (C9J0Q4\_HUMAN)

### References: This product has been used in the following references.

1. Miyase S *et al* "Differential regulation of Rad18 through Rad6-dependent mono- and polyubiquitination" *J Biol Chem* **280**: 515-524 (2005) PMID: [15509568](#)
2. Tateishi S *et al* "Dysfunction of human Rad18 results in defective postreplication repair and hypersensitivity to multiple mutagens" *PNAS* **97**: 7927-7932 (2000) PMID: [10884424](#)
3. Watanabe K *et al* "Rad18 guides poleta to replication stalling sites through physical interaction and PCNA monoubiquitination" *EMBO J* **23**: 3886-3896 (2004) PMID: [15359278](#)

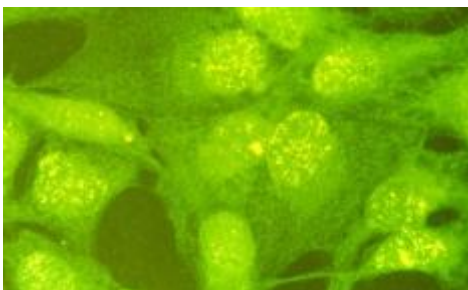


Fig.1 Indirect immunofluorescence staining of Rad18 protein in GM637 cells.

Rad18 protein is stained as yellow dots in nuclei.

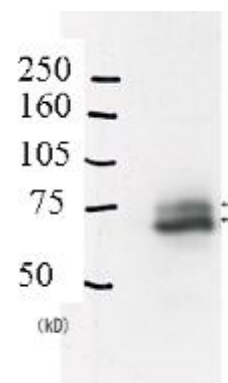


Fig.2 Identification of Rad18 protein in crude extract of A549 cells by Western blotting.

The lower thick band is native Rad18 and the upper thin band is mono-ubiquitinated Rad18 protein (ref. 1)