

REEP1 Antibody
REEP1 Antibody, Clone S345-51
Catalog # ASM10312

Specification

REEP1 Antibody - Product Information

Application	WB
Primary Accession	O8BGH4
Other Accession	NP_848723.1
Host	Mouse
Isotype	IgG2B
Reactivity	Human, Mouse, Rat
Clonality	Monoclonal
Format	HRP

Description

Mouse Anti-Mouse REEP1 Monoclonal IgG2B

Target/Specificity

Detects ~22kDa.

Other Names

Receptor expression-enhancing protein 1 Antibody, C2orf23 Antibody, D6Ert253e Antibody, rcG_56072 Antibody, Reep1 Antibody, SPG31 Antibody

Immunogen

Fusion protein amino acids 111-201 of mouse REEP1

Purification

Protein G Purified

Storage **-20°C**

Storage Buffer

PBS pH7.4, 50% glycerol, 0.1% sodium azide

Shipping Temperature

Blue Ice or 4°C

Certificate of Analysis

A 1:100 dilution of SMC-480 was sufficient for detection of REEP1 in 20 µg of mouse brain lysate by ECL immunoblot analysis using Goat anti-mouse IgG:HRP as the secondary antibody.

Cellular Localization

Mitochondrion | Mitochondrion Membrane | Endoplasmic Reticulum | Endoplasmic Reticulum Membrane

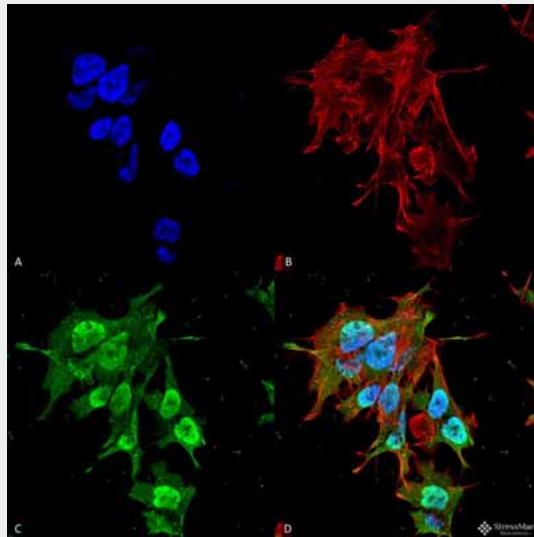
REEP1 Antibody - Protocols

Provided below are standard protocols that you may find useful for product applications.

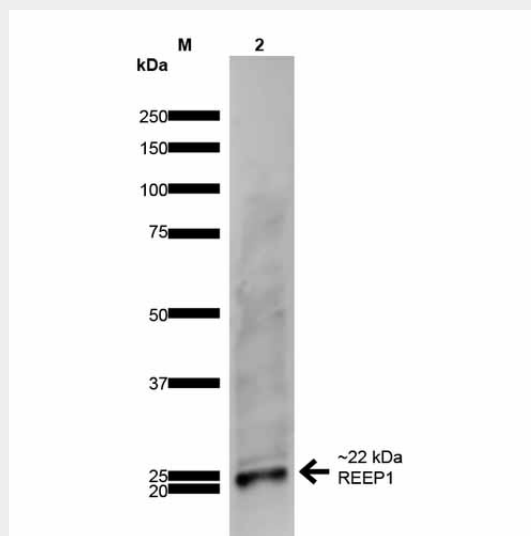
- [Western Blot](#)
- [Blocking Peptides](#)

- [Dot Blot](#)
- [Immunohistochemistry](#)
- [Immunofluorescence](#)
- [Immunoprecipitation](#)
- [Flow Cytometry](#)
- [Cell Culture](#)

REEP1 Antibody - Images



Immunocytochemistry/Immunofluorescence analysis using Mouse Anti-REEP1 Monoclonal Antibody, Clone S345-51 (ASM10312). Tissue: Neuroblastoma cell line (SK-N-BE). Species: Human. Fixation: 4% Formaldehyde for 15 min at RT. Primary Antibody: Mouse Anti-REEP1 Monoclonal Antibody (ASM10312) at 1:100 for 60 min at RT. Secondary Antibody: Goat Anti-Mouse ATTO 488 at 1:100 for 60 min at RT. Counterstain: Phalloidin Texas Red F-Actin stain; DAPI (blue) nuclear stain at 1:1000; 1:5000 for 60 min RT, 5 min RT. Localization: Cytoplasm, Nucleus. Magnification: 60X. (A) DAPI (blue) nuclear stain (B) Phalloidin Texas Red F-Actin stain (C) REEP1 Antibody (D) Composite.



Western Blot analysis of Rat Brain showing detection of ~22 kDa REEP1 protein using Mouse Anti-REEP1 Monoclonal Antibody, Clone S345-51 (ASM10312). Lane 1: MW Ladder. Lane 2: Rat Brain. Load: 20 µg. Block: 2% GE Healthcare Blocker for 1 hour at RT. Primary Antibody: Mouse

Anti-REEP1 Monoclonal Antibody (ASM10312) at 1:1000 for 16 hours at 4°C. Secondary Antibody: Goat Anti-Mouse IgG: HRP at 1:200 for 1 hour at RT. Color Development: ECL solution for 6 min at RT. Predicted/Observed Size: ~22 kDa.

REEP1 Antibody - Background

REEP1 (receptor expression-enhancing protein 1), is a 201 amino acid multi-pass mitochondrion membrane protein that belongs to the DP1 family. REEP1 interacts with odorant receptor proteins and may enhance the cell surface expression of odorant receptors (1, 2). It is also required for endoplasmic-reticulum network formation shaping and remodeling by linking ER tubules to the cytoskeleton (2). Mutations in the REEP1 gene are a common cause of hereditary spastic paraplegia (HSP). Mutations in the REEP1 gene also cause spastic paraplegia autosomal dominant type 31, a neurodegenerative disorder (3).

REEP1 Antibody - References

1. Genes and mapped phenotypes. (n.d.). Retrieved March 11, 2015, from <http://www.ncbi.nlm.nih.gov/gene/65055>
2. Park S.H., Zhu P.P., Parker R.L. Blackstone C. (2010) J Clin Invest. 120(4): 1097-1110.
3. REEP1 - Receptor expression-enhancing protein 1 - Homo sapiens (Human). (n.d.). Retrieved March 11, 2015, from <http://www.uniprot.org/uniprot/Q9H902>