

AS011

Leader in Biomolecular Solutions for Life Science



FITC-conjugated Goat anti-Rabbit IgG (H+L)

Catalog No.: AS011

182 Publications

Basic Information

Observed MW

Calculated MW

Category

Secondary Antibody

Applications

IF/ICC,FC

Cross-Reactivity

Conjugate

FITC. Ex:491nm. Em:516nm.

Background

Secondary antibodies are affinity-purified antibodies which will work with target-specific primary antibody in the detection, sorting or purification of its specified target. Secondary antibodies offer increased versatility enabling users to use many detection systems (e.g. HRP, AP, fluorescence). They can also provide greater sensitivity through signal amplification as multiple secondary antibodies. Most commonly, secondary antibodies are generated by immunizing the host animal (different from host species of primary antibody) with a pooled population of normal immunoglobulins from the host species of primary antibody and can be further purified and modified (i.e. antibody fragmentation, label conjugation, etc.) to ensure well-characterized specificity to corresponding normal immunoglobulins.

Recommended Dilutions

IF/ICC 1:50 - 1:200

FC 1:50 - 1:200

Immunogen Information

Gene ID Swiss Prot

Immunogen

Rabbit IgG

Synonyms

Contact

 www.abclonal.com

Product Information

Source

Goat

Isotype

Fluorescein conjugated IgG

Purification

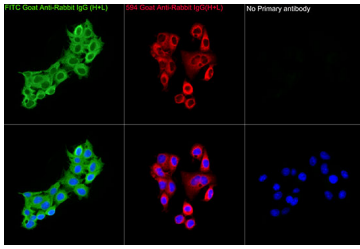
Affinity purification

Storage

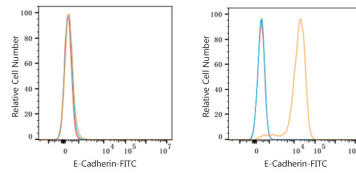
Store at -20°C. Avoid freeze / thaw cycles.

Buffer: PBS with 0.025% Sodium Azide,0.75% BSA,50% glycerol,pH7.3.

Validation Data



Immunofluorescence analysis of Hep G2 cells using ACY Rabbit pAb (A15251) at a dilution of 1:100 (40x lens). Secondary antibody: FITC Goat Anti-Rabbit IgG (H+L) (A15251)/594 Goat Anti-Rabbit IgG(H+L) (AS039) at 1:100 dilution. Blue: DAPI for nuclear staining.



Flow cytometry: 1×10^6 K-562 cells (negative control, left) and A-431 cells (right) were surface-stained with Purified Rabbit anti-Human E-Cadherin mAb (5 μ l/Test, orange line) or secondary antibody only (blue line). Non-fluorescently stained K-562 and A-431 cells were used as blank control (red line). FITC Goat Anti-Rabbit IgG (H+L) (AS011, 1:200) was used as a secondary antibody.