

GABARAPL3 Antibody
Catalog # ASM10508

Specification

GABARAPL3 Antibody - Product Information

Application	WB
Primary Accession	Q9BY60
Host	Rabbit
Reactivity	Human, Rat
Clonality	Polyclonal

Description

Rabbit Anti-Human GABARAPL3 Polyclonal

Target/Specificity

Detects ~14 kDa.

Other Names

GABA(A) receptor-associated protein-like 3 Antibody, GABARAPL3 Antibody, Gamma-aminobutyric acid receptor-associated protein-like 3 Antibody

Immunogen

Synthetic peptide from the C-terminal of Human GABARAPL3

Purification

Peptide Affinity Purified

Storage **-20°C**

Storage Buffer

PBS, 50% glycerol, 0.09% sodium azide

Shipping Temperature **Blue Ice or 4°C**

Certificate of Analysis

A 1:1000 dilution of SPC-626 was sufficient for detection of GABARAPL3 in 15 µg of rat liver cell lysates by ECL immunoblot analysis using goat anti-rabbit IgG:HRP as the secondary antibody.

Cellular Localization

Cytoplasm | Cytoskeleton | Cytoplasmic Vesicle | Autophagosome Membrane | Lipid-Anchor

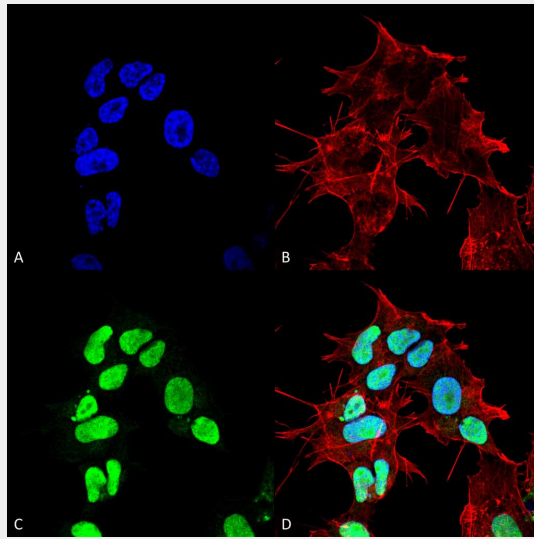
GABARAPL3 Antibody - Protocols

Provided below are standard protocols that you may find useful for product applications.

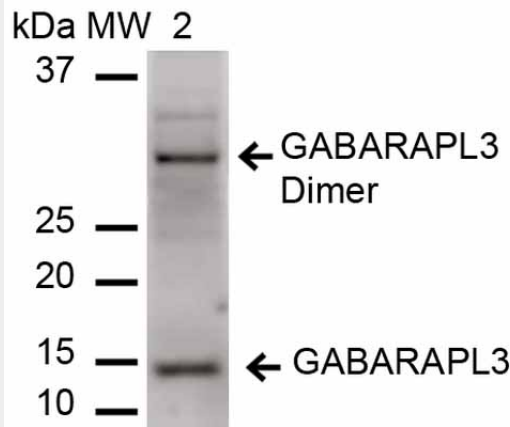
- [Western Blot](#)
- [Blocking Peptides](#)
- [Dot Blot](#)
- [Immunohistochemistry](#)
- [Immunofluorescence](#)
- [Immunoprecipitation](#)
- [Flow Cytometry](#)

• [Cell Culture](#)

GABARAPL3 Antibody - Images



Immunocytochemistry/Immunofluorescence analysis using Rabbit Anti-GABARAPL3 Polyclonal Antibody (ASM10508). Tissue: Neuroblastoma cell line (SK-N-BE). Species: Human. Fixation: 4% Formaldehyde for 15 min at RT. Primary Antibody: Rabbit Anti-GABARAPL3 Polyclonal Antibody (ASM10508) at 1:100 for 60 min at RT. Secondary Antibody: Goat Anti-Mouse ATTO 488 at 1:200 for 60 min at RT. Counterstain: Phalloidin Texas Red F-Actin stain; DAPI (blue) nuclear stain at 1:1000, 1:5000 for 60 min at RT, 5 min at RT. Localization: Nucleoplasm, Cytosol. Magnification: 60X. (A) DAPI (blue) nuclear stain (B) Phalloidin Texas Red F-Actin stain (C) GABARAPL3 Antibody (D) Composite.



Western blot analysis of Rat Liver cell lysates showing detection of ~14 kDa GABARAPL3 protein using Rabbit Anti-GABARAPL3 Polyclonal Antibody (ASM10508). Lane 1: Molecular Weight Ladder (MW). Lane 2: Rat Liver cell lysates. Load: 15 µg. Block: 5% Skim Milk in 1X TBST. Primary Antibody: Rabbit Anti-GABARAPL3 Polyclonal Antibody (ASM10508) at 1:1000 for 60 min at RT. Secondary Antibody: Goat Anti-Rabbit IgG: HRP at 1:2000 for 60 min at RT. Color Development: ECL solution for 6 min in RT. Predicted/Observed Size: ~14 kDa.