

**QKI (pan) Antibody**  
QKI Antibody, Clone S147-6  
Catalog # ASM10299

**Specification**

---

**QKI (pan) Antibody - Product Information**

|                   |                             |
|-------------------|-----------------------------|
| Application       | WB, IHC, ICC                |
| Primary Accession | <a href="#">O96PU8</a>      |
| Other Accession   | <a href="#">NP_006766.1</a> |
| Host              | Mouse                       |
| Isotype           | IgG2b                       |
| Reactivity        | Human, Mouse, Rat           |
| Clonality         | Monoclonal                  |

**Description**

Mouse Anti-Human QKI (pan) Monoclonal IgG2b

**Target/Specificity**

Detects ~36-38kDa.

**Other Names**

Protein quaking Antibody, Hqk Antibody, Hqkl Antibody, QKI Antibody, KH Domain Containing Antibody, RNA Binding (QKI) Antibody

**Immunogen**

Fusion protein amino acids 1-341 (full-length) of human QKI-5. Mouse: 100% identity (341/341 amino acids identical). Rat: 99% identity (339/341 amino acids identical) >90% identity with QKI-6, QKI-7 and QKI-7b.

**Purification**

Protein G Purified

Storage **-20°C**

**Storage Buffer**

PBS pH 7.4, 50% glycerol, 0.1% sodium azide

Shipping Temperature **Blue Ice or 4°C**

**Certificate of Analysis**

1 µg/ml of SMC-467 was sufficient for detection of Pan-QKI in 20 µg of rat brain lysate by colorimetric immunoblot analysis using Goat anti-mouse IgG:HRP as the secondary antibody.

**Cellular Localization**

Cytoplasm | Nucleus

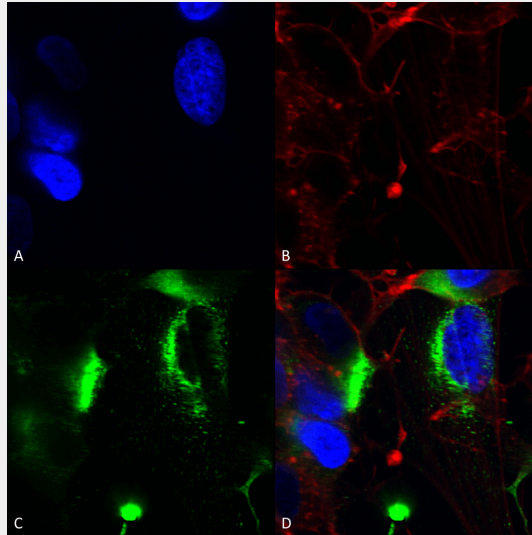
**QKI (pan) Antibody - Protocols**

Provided below are standard protocols that you may find useful for product applications.

- [Western Blot](#)
- [Blocking Peptides](#)

- [Dot Blot](#)
- [Immunohistochemistry](#)
- [Immunofluorescence](#)
- [Immunoprecipitation](#)
- [Flow Cytometry](#)
- [Cell Culture](#)

### QKI (pan) Antibody - Images



Immunocytochemistry/Immunofluorescence analysis using Mouse Anti-QKI (pan) Monoclonal Antibody, Clone N147/6 (ASM10299). Tissue: Neuroblastoma cells (SH-SY5Y). Species: Human. Fixation: 4% PFA for 15 min. Primary Antibody: Mouse Anti-QKI (pan) Monoclonal Antibody (ASM10299) at 1:200 for overnight at 4°C with slow rocking. Secondary Antibody: AlexaFluor 488 at 1:1000 for 1 hour at RT. Counterstain: Phalloidin-iFluor 647 (red) F-Actin stain; Hoechst (blue) nuclear stain at 1:800, 1.6mM for 20 min at RT. (A) Hoechst (blue) nuclear stain. (B) Phalloidin-iFluor 647 (red) F-Actin stain. (C) QKI (pan) Antibody (D) Composite.

### QKI (pan) Antibody - Background

QKI is also called Protein Quaking or Hqkl. QKI is an RNA-binding protein that plays a central role in myelination. QKI acts by regulating pre-mRNA splicing, mRNA export, mRNA stability and protein translation, and is itself, regulated by alternative splicing. QKI is expressed in the frontal cortex of brain, but is shown to be down-regulated in the brain of schizophrenic patients.