

A24251

Leader in Biomolecular Solutions for Life Science



# PE Rabbit anti-Human CD79b/Igβ mAb

Catalog No.: A24251

## Basic Information

---

### Observed MW

### Calculated MW

14kDa/26kDa

### Category

SMab Recombinant Monoclonal  
Antibody

### Applications

FC

### Cross-Reactivity

Human

### CloneNo number

ARC61823-PE

### Conjugate

PE. Ex:565nm. Em:574nm.

## Recommended Dilutions

---

FC 5  $\mu$ l per  $10^6$  cells in  
100  $\mu$ l volume

## Contact

---



[www.abclonal.com](http://www.abclonal.com)

## Background

---

The B lymphocyte antigen receptor is a multimeric complex that includes the antigen-specific component, surface immunoglobulin (Ig). Surface Ig non-covalently associates with two other proteins, Ig-alpha and Ig-beta, which are necessary for expression and function of the B-cell antigen receptor. This gene encodes the Ig-beta protein of the B-cell antigen component. Alternatively spliced transcript variants encoding different isoforms have been described.

## Immunogen Information

---

### Gene ID

974

### Swiss Prot

P40259

### Immunogen

Recombinant fusion protein containing a sequence corresponding to amino acids 29-159 of human CD79b/Igβ (NP\_000617.1).

### Synonyms

CD79B; AGM6; B29; IGB; CD79b molecule

## Product Information

---

### Source

Rabbit

### Isotype

IgG

### Purification

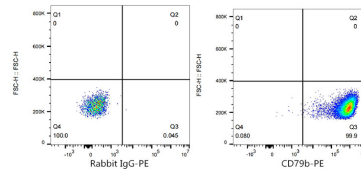
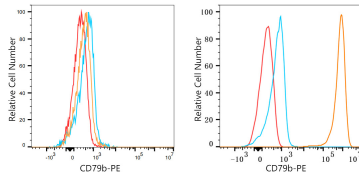
Affinity purification

### Storage

Store at 2-8°C. Avoid freeze.

Buffer: PBS with 0.03% proclin300,0.2% BSA,pH7.3.

## Validation Data



Flow cytometry:  $1 \times 10^6$  HAP1 cells (negative control, left) and Daudi cells (right) were surface-stained with PE Rabbit anti-Human CD79b/Ig $\beta$  mAb (A24251, 5  $\mu$ l/Test, orange line) or PE Rabbit IgG isotype control (5  $\mu$ l/Test, blue line). Non-fluorescently stained cells were used as blank control (red line).

Flow cytometry:  $1 \times 10^6$  Daudi cells were surface-stained with PE Rabbit IgG isotype control (5  $\mu$ l/Test, left) or PE Rabbit anti-Human CD79b/Ig $\beta$  mAb (A24251, 5  $\mu$ l/Test, right).