

**PI 3 Kinase Class 3 antibody**  
Catalog # ASM10533**Specification****PI 3 Kinase Class 3 antibody - Product Information**

Application	<b>WB</b>
Primary Accession	<a href="#">Q8NEB9</a>
Other Accession	<a href="#">NP_002638.2</a>
Host	<b>Rabbit</b>
Reactivity	<b>Mouse, Rat</b>
Clonality	<b>Polyclonal</b>

**Description**

Rabbit Anti-Human PI 3 Kinase Class 3 Polyclonal

**Target/Specificity**

Detects ~101.5 kDa.

**Other Names**

PI3 kinase type 3 Antibody, PI 3 kinase type 3 Antibody, hVps34 Antibody, Phosphatidylinositol 3-kinase p100 subunit Antibody, Phosphatidylinositol 3 kinase p100 subunit Antibody, PI3K type 3 Antibody, PI3-kinase type 3 Antibody, EC:2.7.1.137 Antibody, PK3C3\_HUMAN Antibody, PtdIns-3-kinase type 3 Antibody, PIK3C3 Antibody, VPS34 Antibody, Pik3c3 Antibody, Phosphoinositide 3 kinase class 3 Antibody, Phosphatidylinositol 3-kinase catalytic subunit type 3 Antibody, PtdIns 3 kinase type 3 Antibody, Phosphoinositide-3-kinase class 3 Antibody, Phosphatidylinositol 3 kinase class 3 Antibody, Vps 34 Antibody, Phosphatidylinositol 3 kinase catalytic subunit type 3 Antibody, MGC61518 Antibody, Vps34 Antibody, PI3 kinase class 3 Antibody

**Immunogen**

Synthetic peptide from the N-terminal of Human PI 3 Kinase Class 3

**Purification**

Peptide Affinity Purified

Storage **-20°C****Storage Buffer**

PBS, 50% glycerol, 0.09% sodium azide

Shipping Temperature

**Blue Ice or 4°C****Certificate of Analysis**

A 1:1000 dilution of SPC-661 was sufficient for detection of PI 3 Kinase Class 3 in 15 µg of mouse liver cell lysates by ECL immunoblot analysis using goat anti-rabbit IgG:HRP as the secondary antibody.

**Cellular Localization**

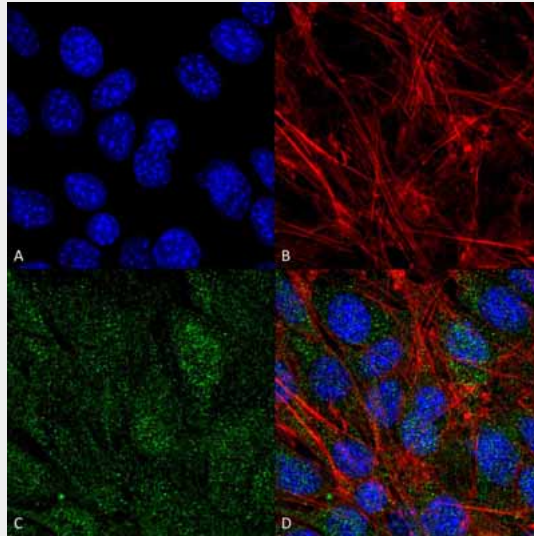
Midbody | Late Endosome | Cytoplasmic Vesicle | Autophagosome

**PI 3 Kinase Class 3 antibody - Protocols**

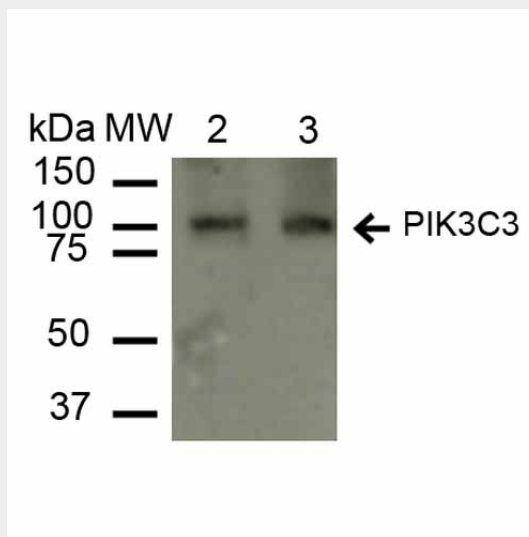
Provided below are standard protocols that you may find useful for product applications.

- [Western Blot](#)
- [Blocking Peptides](#)
- [Dot Blot](#)
- [Immunohistochemistry](#)
- [Immunofluorescence](#)
- [Immunoprecipitation](#)
- [Flow Cytometry](#)
- [Cell Culture](#)

**PI 3 Kinase Class 3 antibody - Images**



Immunocytochemistry/Immunofluorescence analysis using Rabbit Anti-PI 3 Kinase Class 3 Polyclonal Antibody (ASM10533). Tissue: C2C12 Cells (Mouse Myoblast cell line). Species: Mouse. Fixation: 4% Formaldehyde for 15 min at RT. Primary Antibody: Rabbit Anti-PI 3 Kinase Class 3 Polyclonal Antibody (ASM10533) at 1:100 for 60 min at RT. Secondary Antibody: Goat Anti-Rabbit ATTO 488 at 1:200 for 60 min at RT. Counterstain: Phalloidin Texas Red F-Actin stain; DAPI (blue) nuclear stain at 1:1000, 1:5000 for 60 min at RT, 5 min at RT. Localization: Midbody, Late Endosome, Cytoplasmic Vesicle, Autophagosome. Magnification: 60X. (A) DAPI (blue) nuclear stain (B) Phalloidin Texas Red F-Actin stain (C) PI 3 Kinase Class 3 antibody (D) Composite.



Western blot analysis of Rat, Mouse Liver cell lysates showing detection of ~101.5 kDa PI 3

Kinase Class 3 protein using Rabbit Anti-PI 3 Kinase Class 3 Polyclonal Antibody (ASM10533). Lane 1: Molecular Weight Ladder (MW). Lane 2: Rat Liver cell lysates. Lane 3: Mouse Liver cell lysates. Load: 15  $\mu$ g. Block: 5% Skim Milk in 1X TBST. Primary Antibody: Rabbit Anti-PI 3 Kinase Class 3 Polyclonal Antibody (ASM10533) at 1:1000 for 2 hours at RT. Secondary Antibody: Goat Anti-Rabbit IgG: HRP at 1:2000 for 60 min at RT. Color Development: ECL solution for 6 min in RT. Predicted/Observed Size: ~101.5 kDa.