

GABARAP Antibody
Catalog # ASM10503

Specification

GABARAP Antibody - Product Information

Application	WB
Primary Accession	O95166
Other Accession	NP_009209.1
Host	Rabbit
Reactivity	Human
Clonality	Polyclonal

Description

Rabbit Anti-Human GABARAP Polyclonal

Target/Specificity

Detects ~14-16kDa.

Other Names

ATG8A Antibody, GABARAP A Antibody, GABA(A) Receptor Associated Protein Antibody, MM46 Antibody

Immunogen

Synthetic peptide from the N-terminal of human GABARAP

Purification

Peptide Affinity Purified

Storage **-20°C**

Storage Buffer

PBS, 50% glycerol, 0.09% sodium azide

Shipping Temperature **Blue Ice or 4°C**

Certificate of Analysis

A 1:1000 dilution of SPC-620 was sufficient for detection of GABARAP on mouse kidney lysates using Goat anti-rabbit IgG:HRP as the secondary antibody.

Cellular Localization

Endomembrane System | Cytoplasm | Cytoskeleton | Golgi Apparatus | Golgi Apparatus Membrane | Cytoplasmic Vesicle

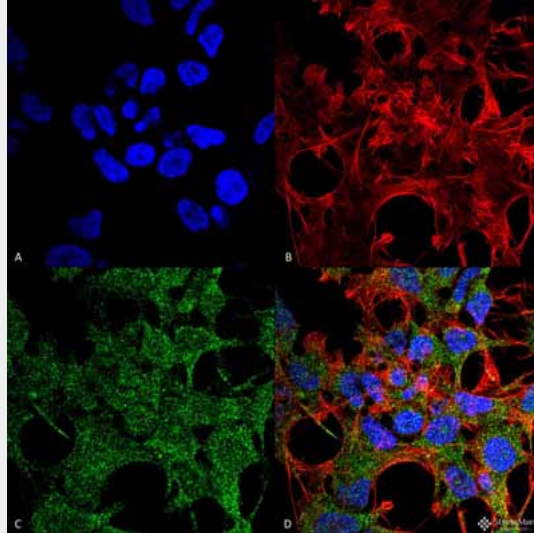
GABARAP Antibody - Protocols

Provided below are standard protocols that you may find useful for product applications.

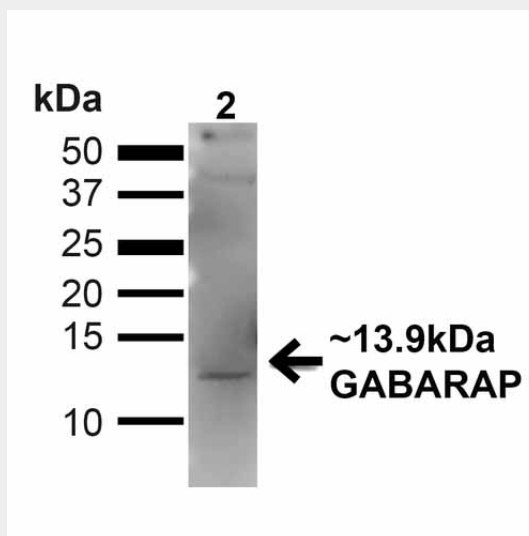
- [Western Blot](#)
- [Blocking Peptides](#)
- [Dot Blot](#)
- [Immunohistochemistry](#)
- [Immunofluorescence](#)

- [Immunoprecipitation](#)
- [Flow Cytometry](#)
- [Cell Culture](#)

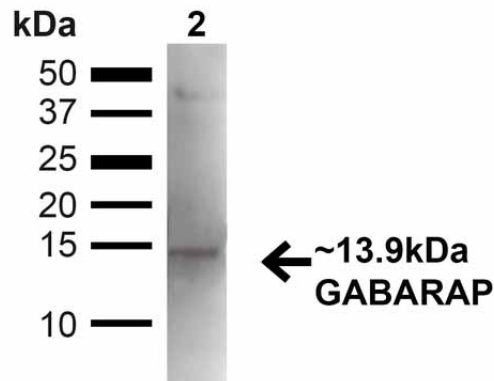
GABARAP Antibody - Images



Immunocytochemistry/Immunofluorescence analysis using Rabbit Anti-GABARAP Polyclonal Antibody (ASM10503). Tissue: Neuroblastoma cell line (SK-N-BE). Species: Human. Fixation: 4% Formaldehyde for 15 min at RT. Primary Antibody: Rabbit Anti-GABARAP Polyclonal Antibody (ASM10503) at 1:100 for 60 min at RT. Secondary Antibody: Goat Anti-Rabbit ATTO 488 at 1:100 for 60 min at RT. Counterstain: Phalloidin Texas Red F-Actin stain; DAPI (blue) nuclear stain at 1:1000, 1:5000 for 60min RT, 5min RT. Localization: Endomembrane System, Cytoplasm, Golgi Apparatus Membrane, Cytoplasmic Vesicle. Magnification: 60X. (A) DAPI (blue) nuclear stain (B) Phalloidin Texas Red F-Actin stain (C) GABARAP Antibody (D) Composite.



Western blot analysis of Human 293T showing detection of ~13.9kDa GABARAP protein using Rabbit Anti-GABARAP Polyclonal Antibody (ASM10503). Lane 1: MW Ladder. Lane 2: Human 293T (20 µg). Load: 20 µg. Block: 5% milk + TBST for 1 hour at RT. Primary Antibody: Rabbit Anti-GABARAP Polyclonal Antibody (ASM10503) at 1:1000 for 1 hour at RT. Secondary Antibody: Goat Anti-Rabbit HRP at 1:2000 for 1 hour at RT. Color Development: TMB solution for 12 min at RT. Predicted/Observed Size: ~13.9kDa. Other Band(s): ~40kDa (Complex).



Western blot analysis of Mouse Kidney showing detection of ~13.9kDa GABARAP protein using Rabbit Anti-GABARAP Polyclonal Antibody (ASM10503). Lane 1: MW Ladder. Lane 2: Mouse Kidney (20 µg). Load: 20 µg. Block: 5% milk + TBST for 1 hour at RT. Primary Antibody: Rabbit Anti-GABARAP Polyclonal Antibody (ASM10503) at 1:1000 for 1 hour at RT. Secondary Antibody: Goat Anti-Rabbit: HRP at 1:2000 for 1 hour at RT. Color Development: TMB solution for 12 min at RT. Predicted/Observed Size: ~13.9kDa. Other Band(s): ~40kDa (Complex).

GABARAP Antibody - Background

Gamma-aminobutyric acid receptor-associated protein, or GABARAP, are ligand gated chloride channels that mediate inhibitory neurotransmission. It clusters neurotransmitter receptors by mediating its interaction with the cytoskeleton (1).

GABARAP Antibody - References

1. "Entrez Gene: GABARAP GABA(A) receptor-associated protein".