

NKCC2 Antibody
Catalog # ASM10477**Specification**

NKCC2 Antibody - Product Information

Application	WB
Primary Accession	Q5POV1
Other Accession	NP_062007
Host	Rabbit
Reactivity	Human, Mouse, Rat
Clonality	Polyclonal

Description

Rabbit Anti-Rat NKCC2 Polyclonal

Target/Specificity

Detects ~160kDa.

Other Names

SLC12A1 Antibody, sodium potassium chloride cotransporter 2 Antibody, sodium-potassium-chloride cotransporter isoform 2 Antibody, BSC1 Antibody, MBSC1 Antibody, Na-K-2Cl cotransporter Antibody, NKCC2A variant A Antibody, RBSC Antibody

Immunogen

Produced against a synthetic peptide mapping to a segment (amino acids 33-55) of the N-terminal tail of rat NKCC2 (antibody designation L224).

Purification

Protein A Purified

Storage **-20°C****Storage Buffer**

PBS, 50% glycerol, 0.09% sodium azide

Shipping Temperature **Blue Ice or 4°C****Certificate of Analysis**

1 µg/ml of SPC-401 was sufficient for detection of NKCC2 in 10 µg of rat kidney tissue lysate by colorimetric immunoblot analysis using Goat anti-rabbit IgG:HRP as the secondary antibody.

Cellular Localization

Membrane

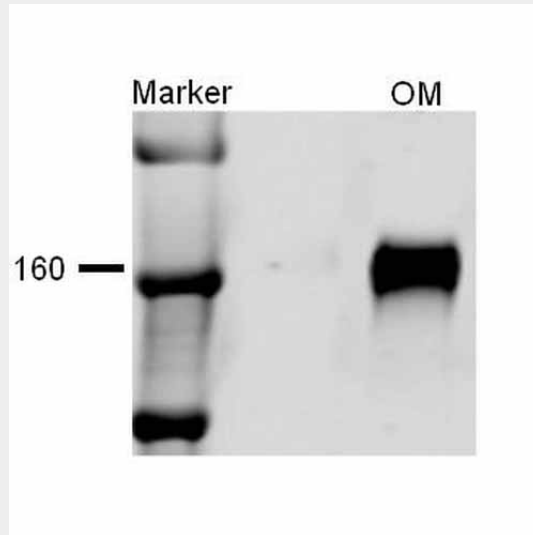
NKCC2 Antibody - Protocols

Provided below are standard protocols that you may find useful for product applications.

- [Western Blot](#)
- [Blocking Peptides](#)
- [Dot Blot](#)
- [Immunohistochemistry](#)

- [Immunofluorescence](#)
- [Immunoprecipitation](#)
- [Flow Cytometry](#)
- [Cell Culture](#)

NKCC2 Antibody - Images



Western blot analysis of Rat kidney tissue lysates showing detection of NKCC2 protein using Rabbit Anti-NKCC2 Polyclonal Antibody (ASM10477). Primary Antibody: Rabbit Anti-NKCC2 Polyclonal Antibody (ASM10477) at 1:1000.

NKCC2 Antibody - Background

NKCC2, a kidney-specific member of the cation chloride co-transporter family SLC12, facilitates transport of sodium, potassium, and chloride ions from the lumen of the renal thick ascending limb into the cell (1, 2). Transport of sodium dilutes the luminal fluid, decreasing its osmolality creating an osmotic driving force for water reabsorption in the connecting tubule and cortical collecting duct under the influence of the hormone vasopressin. NKCC2 is found on the apical surface of the thick ascending limb of the loop of Henle and is blocked by loop diuretics such as furosemide (1).

NKCC2 Antibody - References

1. Caceres P.S., Ares G.R., and Ortiz P.A. (2009) J Biol Chem. 284(37): 24965-24971.
2. Xue H., et al. (2009) Neurogastroentrol Motil. 21(10): 1068-1089.