

**VGlut3 Antibody**  
**VGLUT3 Antibody, Clone S34-34**  
**Catalog # ASM10231**

**Specification**

---

**VGlut3 Antibody - Product Information**

Application	<b>WB, IHC, ICC</b>
Primary Accession	<a href="#">O7TSF2</a>
Other Accession	<a href="#">NP_714947.1</a>
Host	<b>Mouse</b>
Isotype	<b>IgG1</b>
Reactivity	<b>Human, Mouse, Rat</b>
Clonality	<b>Monoclonal</b>

**Description**

Mouse Anti-Rat VGlut3 Monoclonal IgG1

**Target/Specificity**

Detects ~65kDa.

**Other Names**

DFNA25 Antibody, Vesicular glutamate transporter 3 Antibody, deafness autosomal dominant 25 Antibody, SLC17A8 Antibody, Solute carrier family 17 member 8 Antibody, VGLUT 3 Antibody, Solute carrier family 17 (sodium dependent inorganic phosphate cotransporter) member 8 Antibody

**Immunogen**

Fusion protein amino acids 546-588 (cytoplasmic C-terminus) of rat VGlut3

**Purification**

Protein G Purified

Storage **-20°C**

**Storage Buffer**

PBS pH7.4, 50% glycerol, 0.09% sodium azide

Shipping Temperature **Blue Ice or 4°C**

**Certificate of Analysis**

1 µg/ml of SMC-397 was sufficient for detection of VGLut3 in 20 µg of CV-1 fibroblast cells (lysate) transfected with VGlut3 by colorimetric immunoblot analysis using goat anti-mouse IgG:HRP as the secondary antibody.

**Cellular Localization**

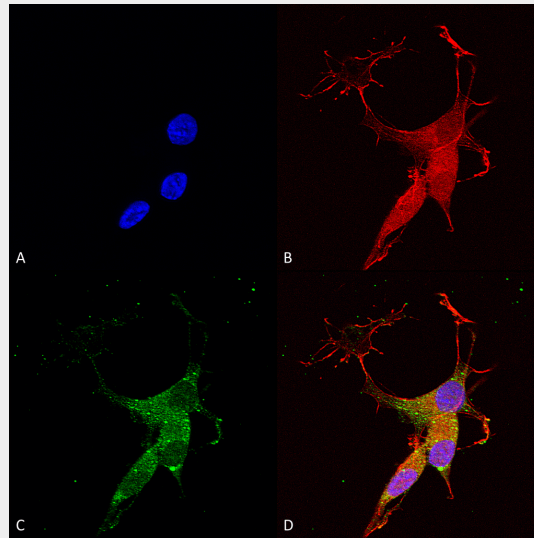
Cytoplasmic Vesicle | Secretory Vesicle | Synaptic Vesicle Membrane | Membrane | Cell Junction | Synapse

**VGlut3 Antibody - Protocols**

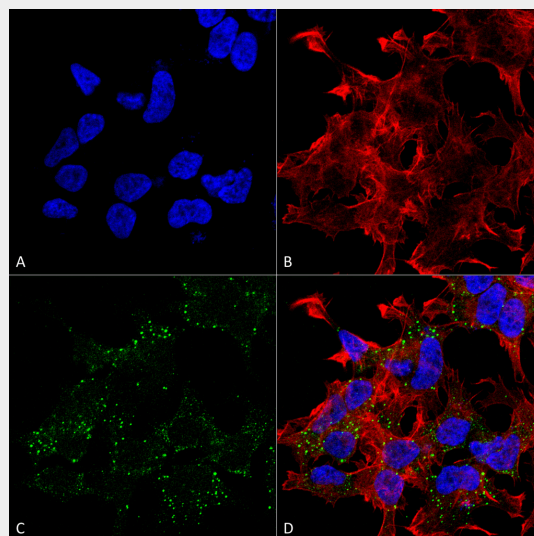
Provided below are standard protocols that you may find useful for product applications.

- [Western Blot](#)
- [Blocking Peptides](#)
- [Dot Blot](#)
- [Immunohistochemistry](#)
- [Immunofluorescence](#)
- [Immunoprecipitation](#)
- [Flow Cytometry](#)
- [Cell Culture](#)

### VGlut3 Antibody - Images



Immunocytochemistry/Immunofluorescence analysis using Mouse Anti-VGLUT3 Monoclonal Antibody, Clone N34/34 (ASM10231). Tissue: Neuroblastoma cells (SH-SY5Y). Species: Human. Fixation: 4% PFA for 15 min. Primary Antibody: Mouse Anti-VGLUT3 Monoclonal Antibody (ASM10231) at 1:50 for overnight at 4°C with slow rocking. Secondary Antibody: AlexaFluor 488 at 1:1000 for 1 hour at RT. Counterstain: Phalloidin-iFluor 647 (red) F-Actin stain; Hoechst (blue) nuclear stain at 1:800, 1.6mM for 20 min at RT. (A) Hoechst (blue) nuclear stain. (B) Phalloidin-iFluor 647 (red) F-Actin stain. (C) VGLUT3 Antibody (D) Composite.



Immunocytochemistry/Immunofluorescence analysis using Mouse Anti-VGLut3 Monoclonal Antibody, Clone N34/34 (ASM10231). Tissue: Neuroblastoma cell line (SK-N-BE). Species: Human.

Fixation: 4% Formaldehyde for 15 min at RT. Primary Antibody: Mouse Anti-VGlut3 Monoclonal Antibody (ASM10231) at 1:100 for 60 min at RT. Secondary Antibody: Goat Anti-Mouse ATTO 488 at 1:200 for 60 min at RT. Counterstain: Phalloidin Texas Red F-Actin stain; DAPI (blue) nuclear stain at 1:1000, 1:5000 for 60 min at RT, 5 min at RT. Localization: Cytoplasmic Vesicle, Secretory Vesicle, Synaptic Vesicle Membrane, Membrane, Cell Junction, Synapse. Magnification: 60X. (A) DAPI (blue) nuclear stain. (B) Phalloidin Texas Red F-Actin stain. (C) VGlut3 Antibody. (D) Composite.

### **VGlut3 Antibody - Background**

Vesicular Glutamate Transporter 3 (VGLUT3) is a multipass membrane protein restricted to synaptic vesicles of glutamergic neurons. It is specifically expressed in amygdala, cerebellum, hippocampus, medulla, spinal cord, and thalamus. Human VGLUT3 shares a 72% sequence homology with VLGUT2 and BNPI.

### **VGlut3 Antibody - References**

1. Amilhon B., et al. (2010) J Neurosci. 30(6): 2198-2210.
2. Herzog E., et al. (2004) Neurosci. 123(4): 983-1002.