

**ATG10 Antibody**  
Catalog # ASM10536**Specification****ATG10 Antibody - Product Information**

Application	<b>WB</b>
Primary Accession	<a href="#">Q9H0Y0</a>
Other Accession	<a href="#">NP_001124500.1</a>
Host	<b>Rabbit</b>
Reactivity	<b>Human</b>
Clonality	<b>Polyclonal</b>

**Description**

Rabbit Anti-Human ATG10 Polyclonal

**Target/Specificity**

Detects ~25 kDa.

**Other Names**

APG 10L Antibody, APG10 like Antibody, Apg 10 Antibody, DKFZP586I0418 Antibody, ATG10 Antibody, ORF Names: Antibody, Ubiquitin-like-conjugating enzyme ATG10 Antibody, APG10, S. cerevisiae, homolog of Antibody, ATG10\_HUMAN Antibody, ATG 10 Antibody, APG10-like Antibody, Autophagy related protein 10 Antibody, APG10 Antibody, Autophagy-related protein 10 Antibody, autophagy 10, S. cerevisiae, homolog of Antibody, APG10L Antibody, ATG10 autophagy related 10 homolog Antibody, ATG10 autophagy related 10 homolog (S. cerevisiae) Antibody, FLJ13954 Antibody, PP12616 Antibody, APG10 autophagy 10 like Antibody, pp12616 Antibody

**Immunogen**

Synthetic peptide from the mid-protein of Human ATG10

**Purification**

Peptide Affinity Purified

Storage **-20°C****Storage Buffer**

PBS, 50% glycerol, 0.09% sodium azide

Shipping Temperature **Blue Ice or 4°C****Certificate of Analysis**

A 1:1000 dilution of SPC-669 was sufficient for detection of ATG10 in 15 µg of human HEK293T cell lysates by ECL immunoblot analysis using goat anti-rabbit IgG:HRP as the secondary antibody.

**Cellular Localization**

Cytoplasm

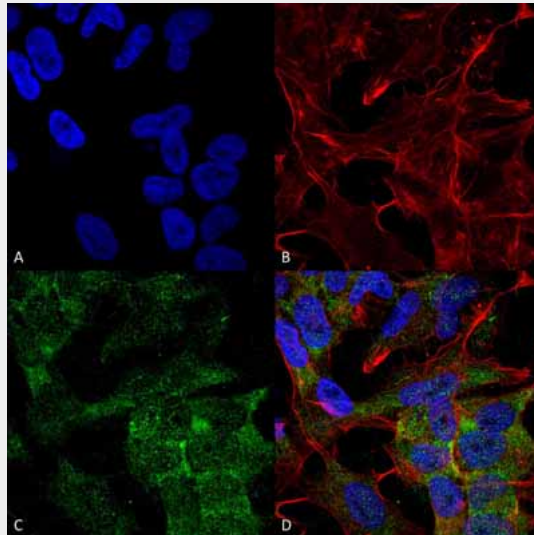
**ATG10 Antibody - Protocols**

Provided below are standard protocols that you may find useful for product applications.

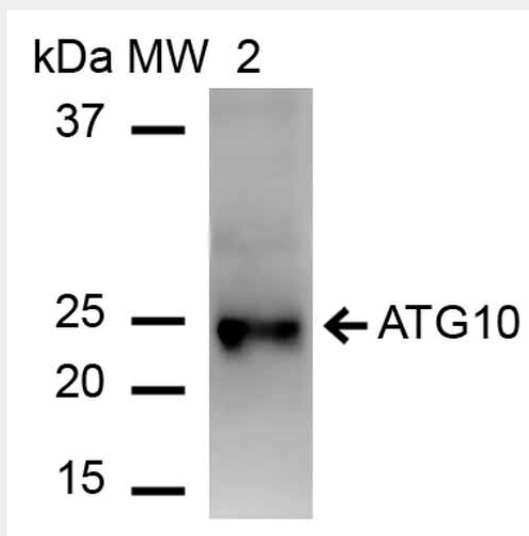
- [Western Blot](#)

- [Blocking Peptides](#)
- [Dot Blot](#)
- [Immunohistochemistry](#)
- [Immunofluorescence](#)
- [Immunoprecipitation](#)
- [Flow Cytometry](#)
- [Cell Culture](#)

### ATG10 Antibody - Images



Immunocytochemistry/Immunofluorescence analysis using Rabbit Anti-ATG10 Polyclonal Antibody (ASM10536). Tissue: Neuroblastoma cell line (SK-N-BE). Species: Human. Fixation: 4% Formaldehyde for 15 min at RT. Primary Antibody: Rabbit Anti-ATG10 Polyclonal Antibody (ASM10536) at 1:100 for 60 min at RT. Secondary Antibody: Goat Anti-Rabbit ATTO 488 at 1:100 for 60 min at RT. Counterstain: Phalloidin Texas Red F-Actin stain; DAPI (blue) nuclear stain at 1:1000, 1:5000 for 60 min at RT, 5 min at RT. Localization: Cytoplasm . Magnification: 60X. (A) DAPI nuclear stain. (B) Phalloidin Texas Red F-Actin stain. (C) ATG10 Antibody . (D) Composite.



Western blot analysis of Human HEK293 cell lysates showing detection of ~25.3 kDa ATG10 protein using Rabbit Anti-ATG10 Polyclonal Antibody (ASM10536). Lane 1: Molecular Weight Ladder (MW). Lane 2: Hek293T cell lysates. Load: 15 µg. Block: 5% Skim Milk in 1X TBST. Primary

Antibody: Rabbit Anti-ATG10 Polyclonal Antibody (ASM10536) at 1:1000 for 60 min at RT.  
Secondary Antibody: Goat Anti-Rabbit IgG: HRP at 1:2000 for 60 min at RT. Color Development:  
ECL solution for 6 min in RT. Predicted/Observed Size: ~25.3 kDa.