

**CCR2 Antibody**  
Catalog # ASM10559

**Specification**

**CCR2 Antibody - Product Information**

|                   |                                |
|-------------------|--------------------------------|
| Application       | <b>WB</b>                      |
| Primary Accession | <a href="#">P41597</a>         |
| Other Accession   | <a href="#">NP_001116513.2</a> |
| Host              | <b>Rabbit</b>                  |
| Reactivity        | <b>Human, Rat</b>              |
| Clonality         | <b>Polyclonal</b>              |

**Description**

Rabbit Anti-Human CCR2 Polyclonal

**Target/Specificity**

Detects ~42 kDa.

**Other Names**

CKR2 Antibody, C-C chemokine receptor type 2 Antibody, Monocyte Chemotactic Protein 1 Receptor Antibody, CC chemokine receptor type 2 Antibody, CCR1L Antibody, CCCKR2 Antibody, CD192 Antibody, MCP-1-R Antibody, MCP1 RECEPTOR Antibody, CKR2B Antibody, C-C CKR-2 Antibody, CC CKR 2 Antibody, CD\_antigen: CD192 Antibody, CC-CKR-2 Antibody, CCR5L Antibody, C C chemokine receptor type 2 Antibody, CD192 antigen Antibody, CKR2A Antibody, CCR2 Antibody, Monocyte chemoattractant protein 1 receptor Antibody, CCR 2 Antibody, CCR2B Antibody, C C CKR 2 Antibody, CCR-2 Antibody, CMKBR2 Antibody, MCP 1 R Antibody, CCR2A Antibody, Chemokine CC Motif Receptor 2 Antibody, Chemokine C C motif receptor 2 Antibody, CCR2\_HUMAN Antibody, MCP1R Antibody, CKR 2 Antibody

**Immunogen**

Synthetic peptide of Human CCR2

**Purification**

Peptide Affinity Purified

Storage **-20°C**

**Storage Buffer**

PBS, 50% glycerol, 0.09% sodium azide

Shipping Temperature **Blue Ice or 4°C**

**Certificate of Analysis**

A 1:1000 dilution of SPC-704 was sufficient for detection of CCR2 in 15 µg of rat brain cell lysates by ECL immunoblot analysis using goat anti-rabbit IgG:HRP as the secondary antibody.

**Cellular Localization**

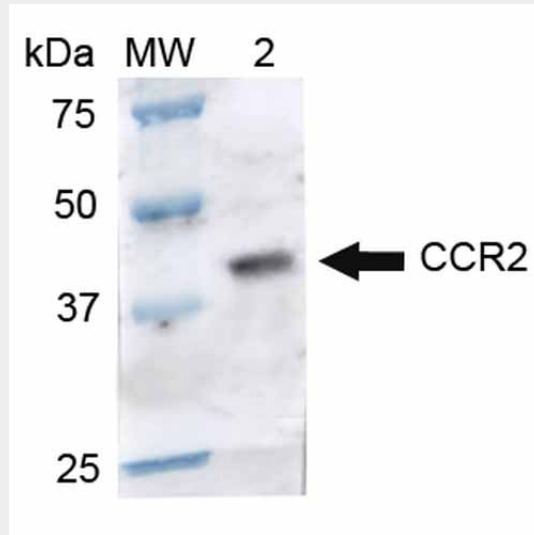
Cell Membrane | Multi-Pass Membrane Protein

**CCR2 Antibody - Protocols**

Provided below are standard protocols that you may find useful for product applications.

- [Western Blot](#)
- [Blocking Peptides](#)
- [Dot Blot](#)
- [Immunohistochemistry](#)
- [Immunofluorescence](#)
- [Immunoprecipitation](#)
- [Flow Cytometry](#)
- [Cell Culture](#)

### CCR2 Antibody - Images



Western blot analysis of Rat Brain cell lysates showing detection of ~41.9 kDa CCR2 protein using Rabbit Anti-CCR2 Polyclonal Antibody (ASM10559). Lane 1: Molecular Weight Ladder (MW). Lane 2: Rat Brain cell lysates. Load: 15 µg. Block: 5% Skim Milk in 1X TBST. Primary Antibody: Rabbit Anti-CCR2 Polyclonal Antibody (ASM10559) at 1:1000 for 2 hours at RT. Secondary Antibody: Goat Anti-Rabbit IgG: HRP at 1:1000 for 60 min at RT. Color Development: ECL solution for 6 min in RT. Predicted/Observed Size: ~41.9 kDa.