

A22331

Leader in Biomolecular Solutions for Life Science



www.abclonal.com

[KO Validated] NF-kB p65/RelA Rabbit mAb

Catalog No.: A22331

KO Validated

Recombinant

10 Publications

Basic Information

Observed MW

65kDa/65KD

Calculated MW

58kDa/59kDa/60kDa

Category

Monoclonal Antibody

Applications

WB,IHC-P,IF/ICC,IP,ChIP,ELISA

Cross-Reactivity

Human,Mouse,Rat,Monkey

CloneNo number

ARC51088

Background

NF-kappa-B is a ubiquitous transcription factor involved in several biological processes. It is held in the cytoplasm in an inactive state by specific inhibitors. Upon degradation of the inhibitor, NF-kappa-B moves to the nucleus and activates transcription of specific genes. NF-kappa-B is composed of NFKB1 or NFKB2 bound to either REL, RELA, or RELB. The most abundant form of NF-kappa-B is NFKB1 complexed with the product of this gene, RELA. Four transcript variants encoding different isoforms have been found for this gene.

Recommended Dilutions

WB 1:10000 - 1:60000

IHC-P 1:200 - 1:2000

IF/ICC 1:100 - 1:800

IP 0.5µg-4µg antibody for
200µg-500µg extracts
of whole cells

ELISA Recommended starting
concentration is 1
µg/mL. Please optimize
the concentration
based on your specific
assay requirements.

ChIP 5µg antibody for
10µg-15µg of
Chromatin

Immunogen Information

Gene ID

5970

Swiss Prot

Q04206

Immunogen

A synthetic peptide corresponding to a sequence within amino acids 450-551 of human NF-kB p65/RelA (NP_068810.3).

Synonyms

p65; CMCU; NFKB3; AIF3BL3; IA

Product Information

Source

Rabbit

Isotype

IgG

Purification

Affinity purification

Storage

Store at -20°C. Avoid freeze / thaw cycles.

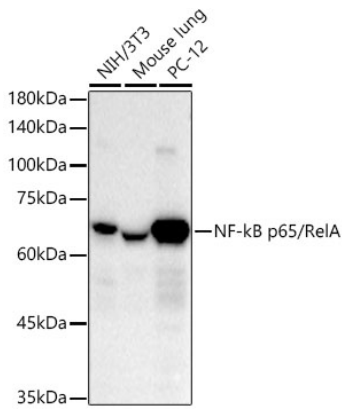
Buffer: PBS with 0.05% proclin300,0.05% BSA,50% glycerol,pH7.3.

Contact

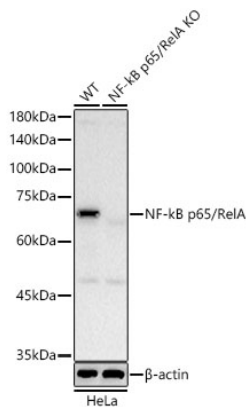


www.abclonal.com

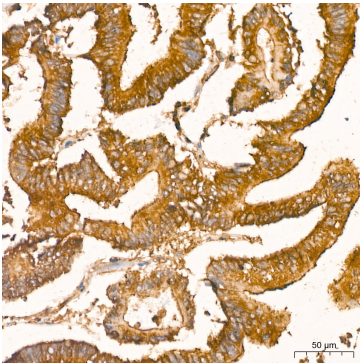
Validation Data



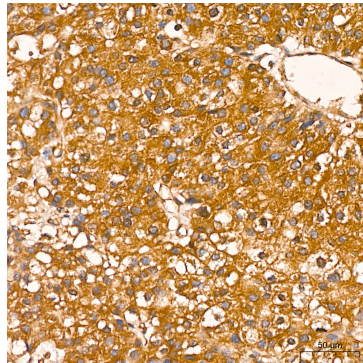
Western blot analysis of various lysates using [KO Validated] NF-kB p65/RelA Rabbit mAb (A22331) at 1:10000 dilution.
 Secondary antibody: HRP-conjugated Goat anti-Rabbit IgG (H+L) (AS014) at 1:10000 dilution.
 Lysates/proteins: 25µg per lane.
 Blocking buffer: 3% nonfat dry milk in TBST.
 Detection: ECL Basic Kit (RM00020).
 Exposure time: 30s.



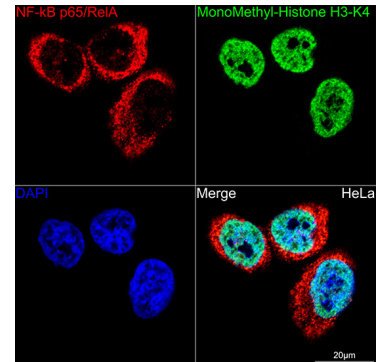
Western blot analysis of lysates from wild type (WT) and NF-kB p65/RelA knockout (KO) HeLa cells, using [KO Validated] NF-kB p65/RelA Rabbit mAb (A22331) at 1:10000 dilution.
 Secondary antibody: HRP-conjugated Goat anti-Rabbit IgG (H+L) (AS014) at 1:10000 dilution.
 Lysates/proteins: 25µg per lane.
 Blocking buffer: 3% nonfat dry milk in TBST.
 Detection: ECL Basic Kit (RM00020).
 Exposure time: 10s.



Immunohistochemistry analysis of paraffin-embedded Human colon carcinoma using [KO Validated] NF-kB p65/RelA Rabbit mAb (A22331) at dilution of 1:200 (40x lens). High pressure antigen retrieval performed with 0.01M Citrate Bufferr (pH 6.0) prior to IHC staining.

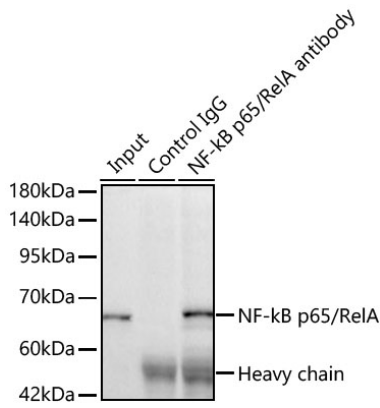


Immunohistochemistry analysis of paraffin-embedded Human liver using [KO Validated] NF-kB p65/RelA Rabbit mAb (A22331) at dilution of 1:200 (40x lens). High pressure antigen retrieval performed with 0.01M Citrate Bufferr (pH 6.0) prior to IHC staining.

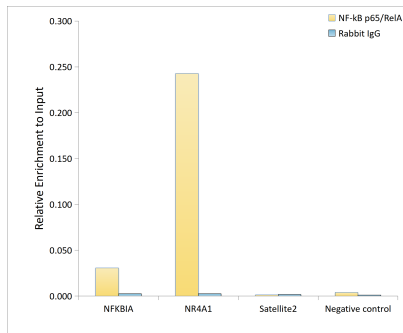


Confocal imaging of HeLa cells using [KO Validated] NF-kB p65/RelA Rabbit mAb (A22331, dilution 1:100) (Red). The cells were counterstained with MonoMethyl-Histone H3-K4 Rabbit mAb (A22078, dilution 1:300) (Green). DAPI was used for nuclear staining (blue). Objective: 60x.

Validation Data



Immunoprecipitation of [KO Validated] NF-kB p65/RelA Rabbit mAb from 500 μ g extracts of HeLa cells was performed using 2 μ g of [KO Validated] NF-kB p65/RelA Rabbit mAb (A22331). Rabbit IgG isotype control (AC042) was used to precipitate the Control IgG sample. IP samples were eluted with 1X Laemmli Buffer. The Input lane represents 10% of the total input. Western blot analysis of immunoprecipitates was conducted using [KO Validated] NF-kB p65/RelA Rabbit mAb (A22331) at a dilution of 1:10000.



Chromatin immunoprecipitation analysis of extracts of HT-1080 cells, HT-1080 cells were treated by TNF- α (20 ng/ml) at 37°C for 30 minutes, using NF-kB p65/RelA antibody (A22331) and rabbit IgG. The amount of immunoprecipitated DNA was checked by quantitative PCR. Histogram was constructed by the ratios of the immunoprecipitated DNA to the input.