

Cpn10 Antibody
Catalog # ASM10452

Specification

Cpn10 Antibody - Product Information

Application	IHC, WB
Primary Accession	P61604
Other Accession	NP_002148.1
Host	Rabbit
Reactivity	Human, Mouse, Rat, Rabbit, Pig, Bovine, Xenopus, Dog, Sheep, Guinea Pig
Clonality	Polyclonal
Format	HRP

Description

Rabbit Anti-Human Cpn10 Polyclonal

Target/Specificity

Detects ~ 10kDa.

Other Names

10kDa Chaperonin Antibody, Chaperonin 10 Antibody, Cpn 10 Antibody, EPF Antibody, GROES Antibody, Heat Shock 10kD protein1 Antibody, HSP10 Antibody, HSPE1 Antibody

Immunogen

Human Cpn10 peptide AA 91-101

Purification

Protein A Purified

Storage **-20°C**

Storage Buffer

PBS pH7.3, 0.02% sodium azide

Shipping Temperature **Blue Ice or 4°C**

Certificate of Analysis

1 µg/ml of SPC-193 was sufficient for detection of Cpn10 in 10 µg of Hela lysates by colorimetric immunoblot analysis using Goat anti-rabbit IgG:HRP as the secondary antibody.

Cellular Localization

Mitochondrion | Mitochondrion Matrix

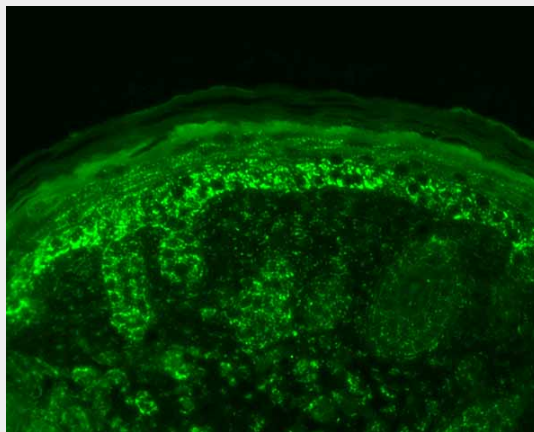
Cpn10 Antibody - Protocols

Provided below are standard protocols that you may find useful for product applications.

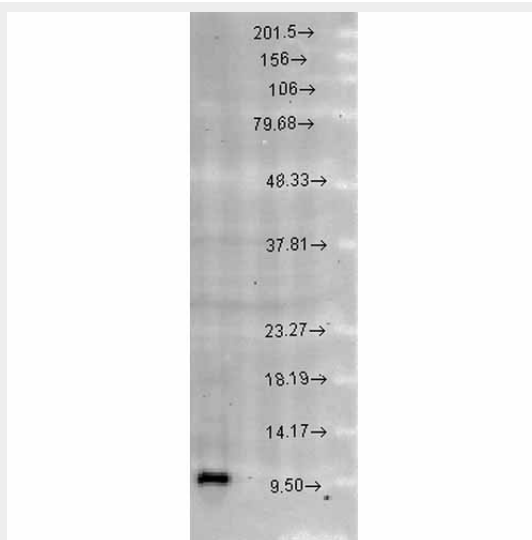
- [Western Blot](#)
- [Blocking Peptides](#)
- [Dot Blot](#)
- [Immunohistochemistry](#)

- [Immunofluorescence](#)
- [Immunoprecipitation](#)
- [Flow Cytometry](#)
- [Cell Culture](#)

Cpn10 Antibody - Images



Immunohistochemistry analysis using Rabbit Anti-Cpn10 Polyclonal Antibody (ASM10452). Tissue: backskin. Species: Mouse. Fixation: Bouin's Fixative Solution. Primary Antibody: Rabbit Anti-Cpn10 Polyclonal Antibody (ASM10452) at 1:100 for 1 hour at RT. Secondary Antibody: FITC Goat Anti-Rabbit (green) at 1:50 for 1 hour at RT. Localization: Strong basal layer punctate staining in the cytoplasm, weakens as it ascends to upper epidermis..



Western blot analysis of Rat brain cell lysates showing detection of Cpn10 protein using Rabbit Anti-Cpn10 Polyclonal Antibody (ASM10452). Load: 15 μ g protein. Block: 1.5% BSA for 30 minutes at RT. Primary Antibody: Rabbit Anti-Cpn10 Polyclonal Antibody (ASM10452) at 1:1000 for 2 hours at RT. Secondary Antibody: Donkey Anti-Rabbit IgG: HRP for 1 hour at RT.

Cpn10 Antibody - Background

Chaperonin 10, otherwise known as Cpn10, (groES in E.coli) make up a family of small heat shock proteins with an approximate molecular mass of 10kDa (HSP10s). Cpn10 acts as a co-chaperone and interacts with the HSP60 family to promote proper folding of polypeptides. Cpn10 and Cpn60 both exhibit sevenfold axis of symmetry and function as a team in the protein folding and assembly process (1). Cpn10 has been located in human platelets, but is also present in human maternal

serum (2, 3). It has been reported that human Cpn10 is identical with early pregnancy factor, which is involved in control over cell growth and development. This identification suggest that Cpn10 may act like a hormone in stressful situations such as pregnancy (4).

Cpn10 Antibody - References

1. Velez-Granell C.S., et al. (1994) J of Cell Science. 107(3): 539-549.
2. Morton H., Hegh V., and Clunie G.J.A. (1974) Nature (London) 249: 459-460.
3. Cavanagh A.C., and Morton H. (1994) Eur. J. Biochem. 222: 551-560.
4. Minto M., et al. (1998) Molecular Cell Research. 1403 (2): 151-157.