

RP01689

Leader in Biomolecular Solutions for Life Science



Recombinant Human CSF-1/M-CSF Protein

Catalog No.: RP01689 **Recombinant**

Sequence Information

Species	Gene ID	Swiss Prot
HEK293 cells	1435	P09603-1

Tags

NO-tag

Synonyms

MCSF; CSF-1 ; CSF1

Product Information

Source	Purification
HEK293 cells	> 97% by SDS-PAGE.

Endotoxin

< 1EU/μg

Formulation

Lyophilized from a 0.22 μm filtered solution of PBS, pH 7.4.

Reconstitution

Centrifuge the vial before opening. Reconstitute to a concentration of 0.1-0.5 mg/mL in sterile distilled water. Avoid vortex or vigorously pipetting the protein. For long term storage, it is recommended to add a carrier protein or stabilizer (e.g. 0.1% BSA, 5% HSA, 10% FBS or 5% Trehalose), and aliquot the reconstituted protein solution to minimize free-thaw cycles.

Contact



www.abclonal.com

Background

The colony stimulating factor 1 (CSF1), also known as macrophage colony-stimulating factor (M-CSF), is a secreted cytokine which influences hematopoietic stem cells to differentiate into macrophages or other related cell types. Eukaryotic cells also produce M-CSF in order to combat intercellular viral infection. It is one of the three experimentally described colony-stimulating factors. M-CSF binds to the colony stimulating factor 1 receptor. Macrophage colony-stimulating factor has been shown to interact with PIK3R2. M-CSF (or CSF-1) is a hematopoietic growth factor that is involved in the proliferation, differentiation, and survival of monocytes, macrophages, and bone marrow progenitor cells. Locally produced M-CSF in the vessel wall contributes to the development and progression of atherosclerosis.

Basic Information

Description

Recombinant Human CSF-1/M-CSF Protein is produced by HEK293 cells expression system. The target protein is expressed with sequence (Glu33-Arg255) of human CSF-1/M-CSF (Accession #NP_000748.3) fused with no additional amino acid.

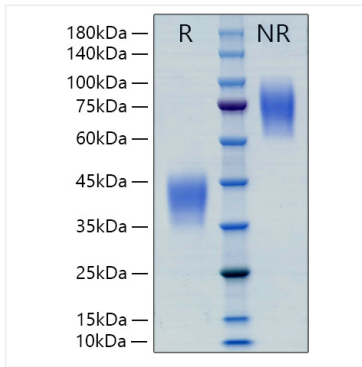
Bio-Activity

Measured in a cell proliferation assay using M-NFS-60 mouse myelogenous leukemia lymphoblast cells. The ED₅₀ for this effect is 3.8-15.2 ng/mL, corresponding to a specific activity of 6.58×10⁴ ~2.63×10⁵ units/mg.

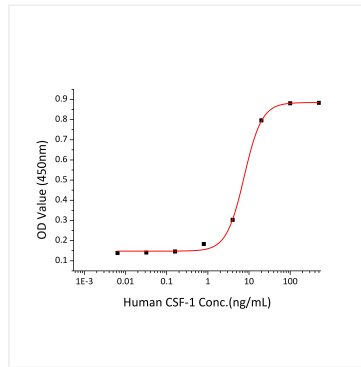
Storage

Store at -20°C. Store the lyophilized protein at -20°C to -80 °C up to 1 year from the date of receipt. After reconstitution, the protein solution is stable at -20°C for 3 months, at 2-8°C for up to 1 week. Avoid repeated freeze/thaw cycles.

Validation Data



Recombinant Human CSF-1/M-CSF Protein was resolved with SDS PAGE under reducing (R) and non-reducing (NR) conditions, showing single bands at 35-45 kDa and 65-90 kDa, respectively.



Recombinant Human CSF-1 stimulates cell proliferation of the M-NFS-60 mouse myelogenous leukemia lymphoblast cells. The ED₅₀ for this effect is 3.8-15.2 ng/mL, corresponding to a specific activity of $6.58 \times 10^4 \sim 2.63 \times 10^5$ units/mg.