

AS081

Leader in Biomolecular Solutions for Life Science



Rabbit Anti-Goat IgG (H+L)

Catalog No.: AS081

Basic Information

Observed MW

25kDa(Light chain),55kDa(Heavy chain)

Calculated MW

Category

Secondary Antibody

Applications

WB

Cross-Reactivity

Background

Secondary antibodies are affinity-purified antibodies which will work with target-specific primary antibody in the detection, sorting or purification of its specified target. Secondary antibodies offer increased versatility enabling users to use many detection systems (e.g. HRP, AP, fluorescence). They can also provide greater sensitivity through signal amplification as multiple secondary antibodies. Most commonly, secondary antibodies are generated by immunizing the host animal (different from host species of primary antibody) with a pooled population of normal immunoglobulins from the host species of primary antibody and can be further purified and modified (i.e. antibody fragmentation, label conjugation, etc.) to ensure well-characterized specificity to corresponding normal immunoglobulins.

Recommended Dilutions

WB 1:500 - 1:1000

Immunogen Information

Gene ID

Swiss Prot

Immunogen

Goat IgG

Synonyms

Contact



www.abclonal.com

Product Information

Source

Rabbit

Isotype

IgG

Purification

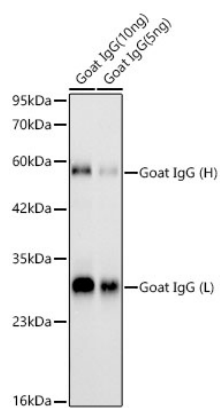
Affinity purification

Storage

Store at -20°C. Avoid freeze / thaw cycles.

Buffer: PBS with 0.05% proclin300,50% glycerol,pH7.3.

Validation Data



Western blot analysis of Goat IgG using Rabbit Anti-Goat IgG (H+L) (AS081) at 1:1000 dilution.
Lysates/proteins: 5 ng - 10 ng per lane.
Blocking buffer: 3% nonfat dry milk in TBST.
Detection: ECL Basic Kit (RM00020).
Exposure time: 60s.