

RP00746

Leader in Biomolecular Solutions for Life Science



# Recombinant Mouse CCL2/MCP-1 Protein

Catalog No.: RP00746 **Recombinant**

## Sequence Information

Species	Gene ID	Swiss Prot
Mouse	20296	P10148

### Tags

No tag

### Synonyms

C-C motif chemokine ligand  
2;CCL2;GDCF-2;HC11;HSMCR30;MCAF;  
Mcp1;MCP-1;SCYA2;SMC-CF;CCL2

## Product Information

Source	Purification
<I>E. coli</I>	> 95% by SDS-PAGE.

### Endotoxin

< 1 EU/μg of the protein by LAL method.

### Formulation

Lyophilized from a 0.2 μm filtered solution of PBS, pH7.4. Contact us for customized product form or formulation.

### Reconstitution

Reconstitute to a concentration of 0.1-0.5 mg/mL in sterile distilled water.

## Background

C-C motif chemokine 2 (CCL2) is a member of the C-C or β chemokine family. Mouse CCL2 shares 82% amino acid (aa) identity with rat CCL2 over the entire sequence, and 58%, 56%, 55%, 53% and 53% aa identity with human, equine, porcine, bovine and canine CCL2, respectively. Fibroblasts, glioma cells, smooth muscle cells, endothelial cells, lymphocytes and mononuclear phagocytes can produce CCL2 either constitutively or upon mitogenic stimulation, but monocytes and macrophages appear to be the major source. In addition to its chemotactic activity, CCL2 induces enzyme and cytokine release by monocytes, NK cells and lymphocytes, and histamine release by basophils that express its receptor, CCR2. Additionally, it promotes Th2 polarization in CD4+ T cells. CCL2-mediated recruitment of monocytes to sites of inflammation is proposed to play a role in the pathology of atherosclerosis, multiple sclerosis and allergic asthma.

## Basic Information

### Description

Recombinant Mouse CCL2/MCP-1 Protein is produced by <I>E. coli</I> expression system. The target protein is expressed with sequence (Gln24-Arg96) of mouse CCL2/MCP-1 (Accession #P10148).

### Bio-Activity

### Storage

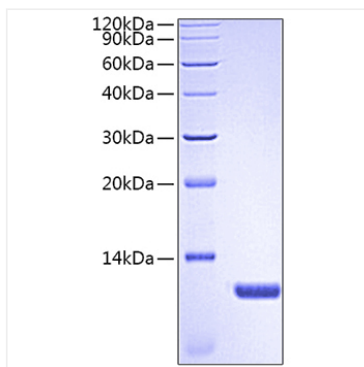
Store the lyophilized protein at -20°C to -80 °C for long term. After reconstitution, the protein solution is stable at -20 °C for 3 months, at 2-8 °C for up to 1 week. Avoid repeated freeze/thaw cycles.

## Contact

 [www.abclonal.com](http://www.abclonal.com)

## Validation Data

---



Recombinant Mouse CCL2/MCP-1  
Protein was determined by SDS-  
PAGE under reducing conditions with  
Coomassie Blue.