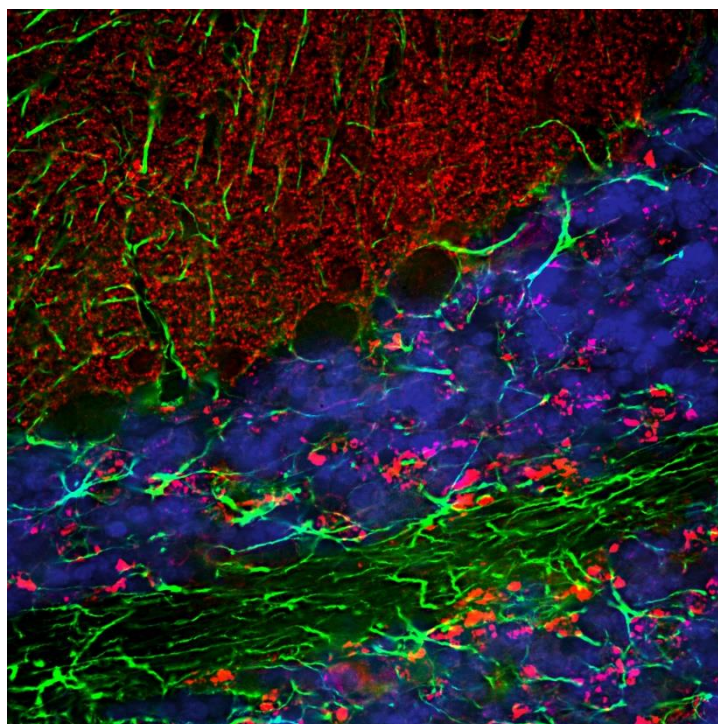


Chicken Anti-alpha Synuclein Polyclonal Antibody

Cat # NB-26-01987 size: 100µl



Immunofluorescent analysis of a section of rat cerebellum stained with chicken pAb to α -synuclein, 1:3,000 in red, and costained with rabbit pAb to GFAP in green. The blue is DAPI staining of nuclear DNA. Following transcardial perfusion of rat with 4% paraformaldehyde, brain was post fixed for 24 hours, cut to 45µM, and free-floating sections were stained with above antibodies.

Description

α -synuclein is a member of the synuclein protein family, the other two members being β and γ synuclein, each protein being coded for by a distinct but related gene. α -synuclein was originally isolated as a major synaptic vesicle associated protein from the electric organ of the fish Torpedo, and direct homologues of α -synuclein are found in all vertebrates. Later work connected α -synuclein expression with several human brain pathologies, so that it is a major component of the Lewy bodies of Parkinson's disease. Point mutations of α -synuclein proved to be causative of some forms of familial Parkinson's disease. α -synuclein is also found in the Lewy bodies of patients with diffuse Lewy body disease and inclusions in glial cells in the brains of patients with multiple system atrophy and amyotrophic lateral sclerosis. α -synuclein is normally heavily expressed in brain and appears to be localized primarily to presynaptic regions, though not with a typical synaptic vesicle distribution pattern.

This antibody recognizes full length human and rodent α -synuclein specifically both in western blots and in immunocytochemical experiments and is a good marker of synapses on transgenic mice.

Product Information

Host:	Chicken
Applications:	ICC, WB, IHC, IF
Reactivity:	Human, Rat, Mouse, Cow, Pig, Horse

Clonality:	Polyclonal IgY
Conjugation:	Unconjugated
Formulation:	Affinity purified antibody at 1mg/mL in 50% PBS, 50% glycerol plus 5mM NaN ₃ .
Dilution Range:	Immunofluorescence: 1:1,000 Immunohistochemistry: 1:1,000 Western Blot: 1:2,000 Dilutions listed as a recommendation. Optimal dilution should be determined by investigator.
Storage Instruction:	Antibody can also be aliquoted and stored frozen at -20° C in a manual defrost freezer for six months without detectable loss of activity. The antibody can be stored at 2° - 8° C for 1 month without detectable loss of activity. Avoid repeated freeze-thaw cycles.

Target

ENTREZ:	6622
UNIPROT:	P37840RRID
Immunogen:	Full length recombinant human protein expressed in and purified from E. coli

*For reference only
For Research Use Only. Not for Diagnostic or Therapeutic Use.*