

A19010

Leader in Biomolecular Solutions for Life Science



CD11b/ITGAM Rabbit mAb

Catalog No.: A19010

Recombinant

3 Publications

Basic Information

Observed MW

Calculated MW

127kDa

Category

SMab Recombinant Monoclonal Antibody

Applications

WB,IHC-P,FC,ELISA

Cross-Reactivity

Human

CloneNo number

ARC0414

Background

This gene encodes the integrin alpha M chain. Integrins are heterodimeric integral membrane proteins composed of an alpha chain and a beta chain. This I-domain containing alpha integrin combines with the beta 2 chain (ITGB2) to form a leukocyte-specific integrin referred to as macrophage receptor 1 ('Mac-1'), or inactivated-C3b (iC3b) receptor 3 ('CR3'). The alpha M beta 2 integrin is important in the adherence of neutrophils and monocytes to stimulated endothelium, and also in the phagocytosis of complement coated particles. Multiple transcript variants encoding different isoforms have been found for this gene.

Recommended Dilutions

WB	1:500 - 1:1000
IHC-P	1:50 - 1:200
FC	1:50 - 1:200
ELISA	Recommended starting concentration is 1 µg/mL. Please optimize the concentration based on your specific assay requirements.

Contact

 www.abclonal.com

Immunogen Information

Gene ID

3684

Swiss Prot

P11215

Immunogen

A synthetic peptide corresponding to a sequence within amino acids 1053-1152 of human CD11b/ITGAM (P11215).

Synonyms

CR3A; MO1A; CD11B; MAC-1; MAC1A; SLEB6; CD11b/ITGAM

Product Information

Source

Rabbit

Isotype

IgG

Purification

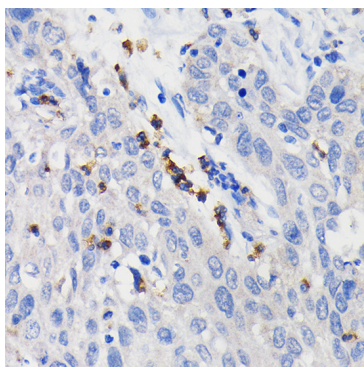
Affinity purification

Storage

Store at -20°C. Avoid freeze / thaw cycles.

Buffer: PBS with 0.02% sodium azide, 0.05% BSA, 50% glycerol, pH7.3.

Validation Data



Immunohistochemistry analysis of paraffin-embedded Human lung cancer using CD11b/ITGAM Rabbit mAb (A19010) at dilution of 1:100 (40x lens). Microwave antigen retrieval performed with 0.01M PBS Buffer (pH 7.2) prior to IHC staining.