

RP01607

Leader in Biomolecular Solutions for Life Science



# Recombinant Mouse CCL2/MCP-1 Protein

Catalog No.: RP01607 **Recombinant**

## Sequence Information

Species	Gene ID	Swiss Prot
HEK293 cells	20296	P10148

### Tags

C-His

### Synonyms

C-C motif chemokine ligand  
2;CCL2;GDCF-2;HC11;HSMCR30;MCAF;  
Mcp1;MCP-1;SCYA2;SMC-CF;CCL2

## Product Information

Source	Purification
HEK293 cells	> 95% by SDS- PAGE.

### Endotoxin

<0.1EU/μg

### Formulation

Lyophilized from a 0.22 μm filtered solution of PBS, pH 7.4.

### Reconstitution

Centrifuge the vial before opening. Reconstitute to a concentration of 0.1-0.5 mg/mL in sterile distilled water. Avoid vortex or vigorously pipetting the protein. For long term storage, it is recommended to add a carrier protein or stabilizer (e.g. 0.1% BSA, 5% HSA, 10% FBS or 5% Trehalose), and aliquot the reconstituted protein solution to minimize free-thaw cycles.

## Contact



[www.abclonal.com](http://www.abclonal.com)

## Background

### Basic Information

#### Description

Recombinant Mouse CCL2/MCP-1 Protein is produced by HEK293 cells expression system. The target protein is expressed with sequence (Gln 24-Asn148) of mouse CCL2/MCP-1 (Accession #NP\_035463.1) fused with a 6×His tag at the C-terminus.

#### Bio-Activity

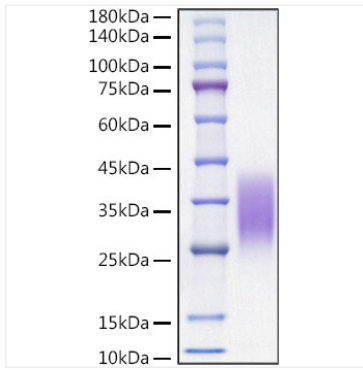
Measured by its ability to chemoattract THP-1 cells. The ED<sub>50</sub> for this effect is typically 6.2-25.0 ng/mL.

#### Storage

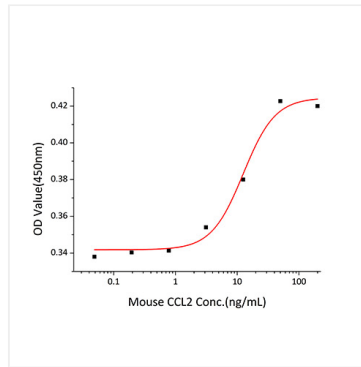
Store at -20°C. Store the lyophilized protein at -20°C to -80 °C up to 1 year from the date of receipt. After reconstitution, the protein solution is stable at -20°C for 3 months, at 2-8°C for up to 1 week. Avoid repeated freeze/thaw cycles.

## Validation Data

---



Recombinant Mouse CCL2/MCP-1 Protein was determined by SDS-PAGE under reducing conditions with Coomassie Blue.



Recombinant Mouse CCL2 chemoattract THP-1 cells. The ED<sub>50</sub> for this effect is typically 6.2-25.0 ng/mL.