

Distributed by:

CliniSciences Group



antibodiesinc

ANTIBODY PRODUCTS AND CUSTOM SERVICES

Founded on a Passion for Science

NeuroMab



NEUROMAB ANTIBODIES

Neuronal and Glial Markers
Ion Channels
Synaptic and Structural Proteins
Cell Signaling

ANTIBODY SERVICES

Monoclonal and Polyclonal Antibody Development
Antibody Scale Up
Antibody Conjugation

Distributed by:

CliniSciences Group



antibodiesinc

HIGHLY VALIDATED NEUROSCIENCE ANTIBODIES

Over 50 Years of Experience in Neuroscience

Founded in 1962, we boast a catalog of 500 mouse monoclonal antibodies against critical neuroscience targets, including the entire NeuroMab antibody portfolio, many of which have been knockout validated in mouse brain.

Customer Focus

Our team of scientists is passionate about antibodies and passionate about neuroscience. We offer personalized technical support from our science team and guarantee every product we sell.

Locally Sourced

We are proud to be an US company, with our entire operation housed at our ISO-13485 accredited facility in Davis, California.

Knockout Validated



Look for our “knockout” icon. Antibodies with this icon have been rigorously validated for specificity using mouse brain tissue that does not express the target protein.

Trial Size Available

Want to try out an antibody before committing to a full-sized vial? Many of our top selling products are available in a smaller size.

ANTIBODY SERVICES

Monoclonal and Polyclonal Antibody Development

We are passionate about the development of fit-for-purpose antibodies and offer a comprehensive suite of antibody services focused on powering your discovery. We will work in partnership with you to produce reagents that meet your expectations.

Hybridoma mAb Scale Up

As an immortal source of mouse monoclonal antibodies, monoclonal cell lines can be grown in small to large scale. We offer both in vitro (bioreactor) and in vivo (ascites) production. Our service also includes cell-line expansion and purification.

Antibody Purification

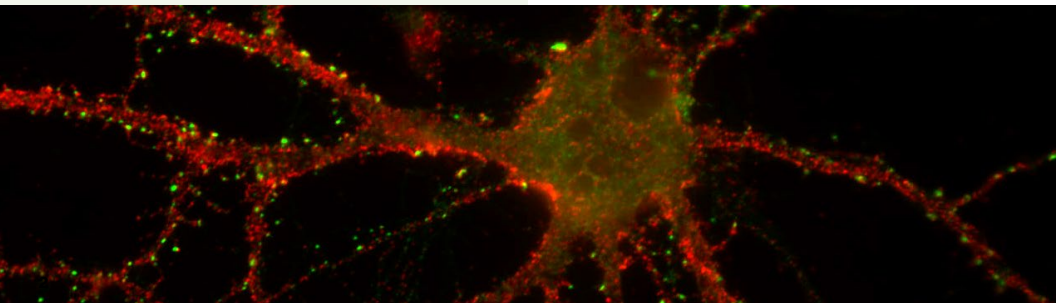
We offer multiple purification methodology options to suit your needs including affinity purification and adsorption.

ELISA / Immunoassay

With experience developing assays in multiple formats, we can work with you directly to design an assay that achieves your objectives.

Antibody / Antigen Conjugation

We provide conjugation services using many of the commonly used conjugates such as Biotin, HRP, KLH, and FITC at various scales.



Distributed by:

CliniSciences Group



FOUR GREAT BRANDS, ONE GREAT TEAM

Antibodies Inc has joined forces with two leaders in the neuroscience field, Aves Labs and PhosphoSolutions. This partnership enables us to offer nearly 1,000 internally produced and validated antibodies from multiple species for ready multiplexing. Additionally, we offer a full suite of custom antibody services to help advance your research.

Aves Labs is well known for its highly-cited chicken antibodies which are focused on neuroscience targets. The company has pioneered novel algorithms for finding highly-immunogenic sequences within proteins and is the world's leading provider of custom chicken antibodies.

ImmunoChemistry Technologies is your partner for cell viability assays, ELISA reagents, and immunoassay services. With decades of expertise with immunoassay development and the development of cell viability assays, ICT offers a wide range of products for immunoassay, cellular, and molecular diagnostics development including fluorescent whole cell viability assays for intracellular apoptosis detection and kits to detect intracellular caspase activity, oxidative stress and much more!

PhosphoSolutions' Antibodies that Work™ have been advancing neuroscience research for over 20 years. With roots in Nobel laureate Paul Greengard's lab, the scientists at PhosphoSolutions are experts in phosphorylation and take pride in the reproducibility and specificity of their antibodies. Their one-of-a-kind serum pooling initiative for polyclonal antibodies assures lot-to-lot consistency in their polyclonal products.



Distributed by:

CliniSciences Group



antibodiesinc

☒ Knockout validated • Trial sizes available

CATALOG #	TARGET PROTEIN	CLONE	SPECIES REACTIVITY	VALIDATED APPLICATIONS
73-349	5-Formylcytidine	N358/68	N/A	DB, ICC
75-268	5-Hydroxymethylcytidine	N297/59	N/A	CI, DB
75-169	6xHis	N144/14	N/A	ELISA, ICC, WB
75-432	ADAM11	N441/35	Mouse, Rat	IHC, ICC, WB
75-083	ADAM22 (Cytoplasmic) ☒	N46/30	Human, Mouse, Rat	IHC, IP, WB
75-093	ADAM22 (Extracellular) ☒	N57/2	Human, Mouse, Rat	IP, WB
75-300	Alpha-2C Adrenergic Receptor ☒	N330A/51	Human, Mouse	ICC, WB
75-302	Alpha-2C Adrenergic Receptor ☒	N330A/80	Human, Mouse	ICC, WB
75-434	AGPS Neo-Epitope	N444/63	Human, Mouse, Rat	IHC, ICC, WB
75-140	Aldh1L1 (Blotting)	N103/39	Human, Mouse, Rat	ICC, WB
75-164	Aldh1L1 (Staining)	N103/31	Rat	IHC, ICC
75-317	AMIGO-1 ☒	L86/33	Human, Mouse, Rat	IHC, ICC, WB
75-318	AMIGO-1 ☒	L86/36	Human, Mouse, Rat	IHC, ICC, WB
75-329	AMIGO-1 ☒	L86A/37	Human, Mouse, Rat	IHC, ICC, WB
73-381	(Pan)-Ankyrin	N388A/60	Human, Mouse, Rat	IHC, ICC, WB
75-144	Ankyrin-B	N105/13	Human, Mouse, Rat	IHC, ICC, WB
75-145	Ankyrin-B	N105/17	Human, Mouse, Rat	IHC, ICC, WB
73-342	Ankyrin-G	N106/43	Human, Mouse, Rat	IHC, ICC
75-187	Ankyrin-G (Blotting)	N106/20	Human, Mouse, Rat	ICC, WB
75-146	Ankyrin-G (Staining)	N106/36	Human, Mouse, Rat	IHC, ICC
75-147	Ankyrin-G (Staining)	N106/65	Human, Mouse, Rat	IHC, ICC
75-380	Ankyrin-R ☒	N388A/10	Human, Mouse, Rat	IHC, ICC, WB



☒ Knockout validated • Trial sizes available

CATALOG #	TARGET PROTEIN	CLONE	SPECIES REACTIVITY	VALIDATED APPLICATIONS
75-415	Ankyrin-R/G	N388A/27	Human, Mouse, Rat	IHC, ICC, WB
75-410	ANO5/TMEM16E	N421A/85	Human	ICC, WB
75-418	ANO6/TMEM16F ☒	N429/19	Human, Mouse, Rat	IHC, ICC, WB
75-299	ARHGAP4	N290B/25	Mouse, Rat	ICC, WB
75-287	Arl13b ☒	N295B/66	Mouse, Rat	IHC, ICC, WB
75-402	Arx ☒	N411/51	Mouse, Rat	IHC, ICC, WB
75-277	ASIC1 ☒	N271/44	Mouse, Rat	IHC, ICC, WB
75-426	ATAT1 ☒	N347/42	Human, Mouse, Rat	ICC, WB
75-117	Ataxin-1, 11NQ ☒	N76/8	Human, Mouse, Rat	IHC, IP, WB
75-122	Ataxin-1, 11NQ ☒	N76/3	Human, Mouse, Rat	IHC, IP, WB
75-102	Ataxin-1, WT	N65/37	Human, Mouse, Rat	ICC, WB
75-345	ATF4	N360A/24	Human, Rat	IHC, ICC, WB
75-330	BAF53a	N336B/83	Human, Mouse, Rat	ICC, WB
75-311	BAF53b ☒	N332B/15	Human, Mouse	IHC, ICC, WB
75-491	Bassoon	L124/59	Mouse, Rat	AT, IHC, ICC, WB
75-270	BBS3/Arl6	N302/10	Human, Mouse, Rat	IHC, ICC, WB
75-321	BBS5	N304B/115	Human, Mouse, Rat	ICC, WB
75-470	BDNF	N450/53	Mouse, Rat	IHC, ICC, WB
75-181	Botch	N116/14	Human, Mouse, Rat	ICC, WB
73-340	Bral1 ☒	N364/42	Mouse, Rat	IHC, ICC, WB
75-341	Bral1 ☒	N364/10	Mouse, Rat	IHC, ICC, WB
75-281	Brevican ☒	N294A/6	Mouse, Rat	ICC, WB



☒ Knockout validated • Trial sizes available

CATALOG #	TARGET PROTEIN	CLONE	SPECIES REACTIVITY	VALIDATED APPLICATIONS
75-294	Brevican ☒	N294A/10	Mouse, Rat	ICC
75-511	c-FOS	N486/76	Human, Mouse, Rat	IHC, ICC, WB
75-506	c-FOS	N486/32	Human, Mouse, Rat	IHC, ICC, WB
75-053	Cav1.2 Ca2+ Channel	L57/46	Human, Mouse, Rat	IHC, IP, WB
75-257	Cav1.2 Ca2+ Channel	N263/31	Human, Mouse, Rat	ICC, WB
75-080	Cav1.3 Ca2+ Channel	N38/8	Human, Mouse, Rat	IHC, ICC, WB
75-113	Cav1.3 Ca2+ Channel	L48A/9	Human, Mouse, Rat	IHC, IP, WB
75-206	Cav3.1 Ca2+ Channel ☒	N178A/9	Human, Mouse, Rat	IHC, ICC, WB
75-095	Cav3.2 Ca2+ Channel ☒	N55/10	Human, Mouse	IHC, ICC, IP, WB
75-052	Cavbeta1 Ca2+ Channel	N7/18	Human, Mouse, Rat	IHC, IP, WB
75-065	Cavbeta2 Ca2+ Channel	N8B/1	Human, Mouse, Rat	IHC, IP, WB
75-054	Cavbeta4 Ca2+ Channel	N10/7	Human, Mouse, Rat	IHC, IP, WB
75-472	Cavβ3 Ca2+ Channel	N473/36	Human, Mouse, Rat	ICC, WB
75-448	CALB1/Calbindin	L109/57	Human, Mouse, Rat	AT, IHC, ICC, WB
73-452	CALB1/Calbindin	L109/39	Human, Mouse, Rat	AT, IHC, ICC, WB
75-488	Calretinin	L122/6	Human, Mouse, Rat	IHC, ICC, WB
75-000	CASK ☒	K56A/50	Human, Mouse, Rat, Xenopus, Zebrafish	IHC, IP, WB
75-001	CASPR/Neurexin IV ☒	K65/35	Human, Mouse, Rat	IHC, IP, WB
75-075	CASPR2 ☒	K67/25	Human, Mouse, Rat	IHC, IP, WB
73-420	Cdk5 ☒	EA7	Human, Mouse, Rat	IHC, ICC, WB
75-202	CDY1//2/L1/L2	N143/36	Human	ICC, WB
75-174	CDY1/2	N143/38	Human	ICC, WB



☒ Knockout validated • Trial sizes available

CATALOG #	TARGET PROTEIN	CLONE	SPECIES REACTIVITY	VALIDATED APPLICATIONS
75-438	Celf4/Brunol4	N446/80	Human, Mouse, Rat	IHC, ICC, WB
15-234	Centromere Protein		Human, Mouse, Rat	ICC
15-235	Centromere Protein		Human, Mouse, Rat	ICC
15-235-F	Centromere Protein - FITC Labeled		Human, Mouse, Rat	ICC
75-284	Chapsyn-110 MAGUK ☒	N18/28	Human, Mouse, Rat	IHC, ICC, WB
75-057	Chapsyn-110/PSD-93 ☒	N18/30	Human, Mouse, Rat	IHC, IP, WB
75-259	Cicn3 ☒	N258/5	Human, Mouse, Rat	IHC, ICC, WB
75-260	Cicn4	N222/6	Human, Mouse, Rat	IHC, ICC, WB
75-400	Cicn5	N406/47	Human, Mouse, Rat	IHC, ICC
73-390	CLN3	N380/87	Human	ICC, WB
73-385	CLN6	N400/24	Human	ICC, WB
75-107	CNGA1 and CNGA3	L36/12	Mouse, Rat	IHC, ICC, WB
75-039	Co-Rest/RCOR1	K72/8	Human, Mouse, Rat	ICC, IP, WB
75-476	Collybistin	L120/12	Mouse, Rat	AT, ICC, WB
75-482	Collybistin	L120/30	Mouse, Rat	IHC, ICC
75-038	Contactin/F3	K73/20	Human, Mouse, Rat	IHC, IP, WB
75-142	Copper ATPase 1 (Menke's Disease Protein) ☒	L60/4	Human, Mouse, Rat	IHC, IP, WB
75-143	Copper ATPase 2 (Wilson's Disease Protein)	L62/29	Human, Mouse, Rat	IHC, IP, WB
75-196	Dicer ☒	N167/7	Human, Mouse, Rat	ICC, WB
75-078	DLX1 ☒	L43/40	Human, Mouse, Rat	IHC, IP, WB
73-290	DNAH1	N251/14	Human	ELISA
73-289	DNAH7	N250/21	Human	ELISA



☒ Knockout validated • Trial sizes available

CATALOG #	TARGET PROTEIN	CLONE	SPECIES REACTIVITY	VALIDATED APPLICATIONS
75-372	DNAIC1 ☒	UNC 65.56.18.11	Human, Mouse	ICC, WB
75-153	DNMT3L	N117/9	Human	ICC, WB
75-214	Doc2B	N150/21	Mouse, Rat	IHC, ICC, WB
75-230	Dopamine D2 Receptor	N186/29	Mouse, Rat	IHC
73-301	Dopamine D3 Receptor	N331/19	Human	ICC
73-428	EAAC1	N420/24	Human, Mouse	IHC, ICC, WB
75-133	FGF11/FHF3	N92/14	Human, Mouse	ICC, IP, WB
75-135	FGF12/FHF1	N94/17	Human, Mouse	ICC
75-134	FGF13/FHF2	N91/27	Human, Mouse	ICC, IP, WB
75-248	FGF13/FHF2, B Isoform	N225A/10	Human	ICC, WB
75-096	FGF14/FHF4 ☒	N56/21	Mouse, Rat	IHC, IP
75-246	(Pan)-FHF-A	N235/22	Human, Mouse, Rat	IHC, ICC, WB
75-201	Fig4/Sac3 ☒	N202/7	Human, Mouse	IHC, ICC, WB
75-328	Flrt3	N353/13	Mouse	ICC
75-326	Foxi2	N349/96	Mouse	ICC, WB
73-338	Foxi3	N359/28	Mouse	ICC, WB
75-207	Frataxin	N191/7	Human	ICC, WB
75-136	GABA(A)R, Alpha1 ☒	N95/35	Human, Mouse	IHC, ICC, WB
75-384	GABA-A-R-Alpha2 ☒	N399/19	Mouse, Rat	IHC, ICC, WB
75-383	GABA-A-R-Alpha4	N398A/34	Mouse, Rat	IHC, ICC, WB
75-401	GABA-A-R-Alpha5 ☒	N415/24	Human, Mouse	IHC, ICC, WB
75-388	GABA-A-R-Alpha6	N229A/32	Mouse, Rat	IHC, ICC, WB



☒ Knockout validated • Trial sizes available

CATALOG #	TARGET PROTEIN	CLONE	SPECIES REACTIVITY	VALIDATED APPLICATIONS
75-137	GABA-A-R, Beta1	N96/55	Human, Mouse	IHC, ICC, WB
75-363	GABA-A-R-Beta2/3	62-3G1	Bovine, Chicken, Human, Mouse, Rat	EM, IHC, ICC, IP, WB
75-149	GABA-A-R, Beta3	N87/25	Human, Mouse	IHC, ICC, WB
75-171	GABA-A-R, Delta	N151/3	Mouse, Rat	ICC, WB
75-398	GABA-A-R-Epsilon	N413/67	Human, Rat	IHC, ICC, WB
75-442	GABA-A-R-Gamma2L	N452/69	Human, Mouse, Rat	IHC, ICC, WB
75-483	GABA-A-R-Gamma2L/S	N452/30	Human, Mouse, Rat	IHC, ICC, WB
75-484	GABA-A-R-Gamma2L/S	N452/73	Human, Mouse, Rat	IHC, ICC
75-419	GABA-A-R-Pi	N431/64	Human	ICC, WB
75-183	GABA-B-R1 ☒	N93A/49	Human, Mouse	IHC, ICC, WB
75-124	GABA-B-R2 ☒	N81/2	Human, Mouse	ICC, WB
75-125	GABA-B-R2 ☒	N81/37	Human, Mouse	IHC, ICC, WB
75-508	GAD65/67	L127/12	Human, Mouse, Rat	AT, IHC, ICC, WB
75-507	GAD67	L127/8	Human, Mouse, Rat	AT, IHC, ICC, WB
75-443	Gephyrin	L106/83	Human, Mouse, Rat	AT, IHC, ICC, WB
75-444	Gephyrin	L106/93	Human, Mouse, Rat	AT, IHC, ICC, WB
75-465	Gephyrin	L106/4	Human, Mouse, Rat	AT, IHC, ICC, WB
75-240	GFAP ☒	N206A/8	Human, Mouse, Rat	IHC, ICC, WB
75-279	GFAP-R416WT ☒	N206B/9	Human, Mouse, Rat	IHC, ICC, WB
75-131	GFP	N86/8	N/A	IHC, IP, WB
75-132	GFP	N86/38	N/A	IHC, IP, WB
75-413	GFP (Green Fluorescent Protein)	N86/20	N/A	ICC, WB



Knockout validated • Trial sizes available

CATALOG #	TARGET PROTEIN	CLONE	SPECIES REACTIVITY	VALIDATED APPLICATIONS
75-414	GFP (Green Fluorescent Protein)	N86/44	N/A	ICC, WB
75-094	GIT1	N39B/8	Human, Mouse, Rat	IHC, IP, WB
75-126	GIT2	N83/48	Human, Mouse, Rat	IHC, IP, WB
75-327	GluA1/GluR1 Glutamate Receptor	N355/1	Mouse, Rat	IHC, ICC, WB
75-002	GluA2/GluR2 Glutamate Receptor	L21/32	Human, Mouse, Rat	EM, IHC, WB
75-272	GluN1/NR1 Glutamate Receptor	N308/48	Human, Mouse, Rat	IHC, ICC, WB
75-288	GluN2A/NR2A	N327/95	Human, Mouse, Rat	IHC, WB
75-097	GluN2B/NR2B Glutamate Receptor	N59/20	Human, Mouse, Rat	IHC, IP, WB
75-101	GluN2B/NR2B Glutamate Receptor	N59/36	Human, Mouse, Rat	IHC, IP, WB
75-411	GluN2C/NR2C	N422/18	Human, Mouse, Rat	IHC, ICC, WB
75-416	GluN3A/NR3A	N416/40	Mouse, Rat	IHC, ICC, WB
75-417	Glycine Receptor Alpha3	N424/45	Human, Mouse, Rat	ICC, WB
75-427	Glycine Receptor Alpha3L	N424/48	Human	ICC, WB
75-179	(Pan)-GRK	N145/20	Human, Mouse, Rat	ICC, WB
75-176	GRK6A/B	N142/28	Mouse	ICC, WB
75-211	Gs Protein, Alpha Subunit	N192/12	Mouse, Rat	WB
75-148	GST	N100/13	N/A	ELISA, WB
75-161	Haspin/GSG2	N128A/2	Human	ICC, IP, WB
75-110	HCN1	N70/28	Human, Mouse, Rat	IHC, IP, WB
75-111	HCN2	N71/37	Mouse, Rat	IHC, IP, WB
75-175	HCN3	N141/28	Mouse, Rat	IHC, ICC, WB
75-150	HCN4	N114/10	Human, Mouse, Rat	IHC, ICC, WB



Knockout validated • Trial sizes available

CATALOG #	TARGET PROTEIN	CLONE	SPECIES REACTIVITY	VALIDATED APPLICATIONS
75-319	Histone H2A.Z Acetyl-Lys4/7/11	N299/39	Human, Mouse, Rat	DB, ELISA
75-276	Histone H2A.Z/V	N310/21	Human, Mouse, Rat	DB, ELISA
75-275	Histone H3-Acetyl-Lys56	N307/12	Human, Mouse, Rat	CI, DB
73-335	Histone H3-Dimethyl-Arg8	N293/50	Human, Mouse, Rat	DB, ELISA
75-223	Histone H3-pThr11	N123/19	Human, Mouse, Rat	DB
75-224	Histone H3-pThr11	N123/48	Human, Mouse, Rat	DB
75-228	Histone H3.3	N158/28	Human, Mouse, Rat	ELISA, IHC
75-320	Histone H4-Dimethyl-Arg3	N309A/21	Human, Mouse, Rat	DB, ELISA
75-454	Homer1	L113/130	Human, Mouse, Rat	AT, IHC, ICC, WB
75-453	Homer1L	L113/27	Human, Mouse, Rat	IHC, ICC
75-437	ICK	N451/73	Mouse, Rat	IHC, ICC, WB
75-233	Iduna/RNF146	N201/35	Mouse, Rat	ICC, WB
75-218	INPP4b	N171/17	Human	ICC, WB
75-035	IP3 Receptor, Type 1	L24/18	Human, Mouse, Rat	IHC, IP, WB
75-449	IRSp53/BAIAP2	L117/1	Human, Mouse, Rat	AT, IHC, ICC, WB
75-163	JIP-2/IB-2 	N135/37	Mouse, Rat	IHC, ICC, WB
75-189	JMJD2A	N154/32	Human	ICC, WB
75-087	BKbeta2 K+ Channel	N53/32	Human, Mouse, Rat	ICC, IP, WB
75-098	BKbeta3a K+ Channel	N40B/18	Human, Mouse, Rat	IHC, IP, WB
75-086	BKbeta4 K+ Channel	L18A/3	Human, Mouse, Rat	IHC, IP, WB
75-006	(Pan)-KChIP K+ Channel	K55/82	Human, Mouse, Rat	IHC, IP, WB
75-003	KChIP1 K+ Channel	K55/7	Human, Mouse, Rat	IHC, IP



☒ Knockout validated • Trial sizes available

CATALOG #	TARGET PROTEIN	CLONE	SPECIES REACTIVITY	VALIDATED APPLICATIONS
75-004	KChIP2b K+ Channel	K60/73	Human, Mouse, Rat	IHC, IP, WB
75-005	KChIP3 K+ Channel ☒	K66/38	Human, Mouse, Rat	IHC, IP, WB
75-406	KChIP4 K+ channel ☒	N423/75	Human, Mouse, Rat	IHC, ICC, WB
75-210	Kir2.1 K+ Channel	N112B/14	Mouse, Rat	ICC, WB
75-203	Kir2.2 K+ Channel	N124B/38	Rat	ICC, WB
75-069	Kir2.3 K+ Channel	N25/35	Human, Rat	IHC, WB
75-471	Kir2.4 K+ Channel	N465/11	Mouse, Rat	IHC, ICC
75-445	Kir3.3 K+ Channel ☒	N455/15	Human, Mouse, Rat	IHC, WB
75-394	Kir6.1 K+ Channel	N366/60	Mouse, Rat	IHC, ICC, WB
75-393	Kir6.2 K+ Channel	N363/71	Mouse, Rat	IHC, ICC
75-007	Kv1.1 K+ Channel ☒	K20/78	Human, Mouse, Rat	IHC, IP, WB
75-105	Kv1.1 K+ Channel (External) ☒	K36/15	Mouse, Rat	IHC, ICC, WB
75-008	Kv1.2 K+ Channel ☒	K14/16	Human, Mouse, Rat	IHC, IP, WB
75-314	Kv1.2 K+ Channel Subunit ☒	L76/36	Human, Mouse, Rat	IHC, WB
75-009	Kv1.3 K+ Channel	L23/27	Human, Mouse, Rat	IHC, IP, WB
75-010	Kv1.4 K+ Channel	K13/31	Human, Mouse, Rat	IHC, IP, WB
75-316	Kv1.4 K+ (Extracellular)	L71/5	Mouse, Rat	ICC, WB
75-011	Kv1.5 K+ Channel	K7/45	Human, Mouse, Rat	ICC, IP, WB
75-012	Kv1.6 K+ Channel	K19/36	Human, Mouse, Rat	IHC, IP
75-477	Kv1.7 K+ Channel	N471/27	Mouse	WB
75-440	Kv11.3 K+ Channel	N447/24	Human, Mouse, Rat	IHC, ICC, WB
75-014	Kv2.1 K+ Channel ☒	K89/34	Human, Mouse, Rat	IHC, IP, WB



☒ Knockout validated • Trial sizes available

CATALOG #	TARGET PROTEIN	CLONE	SPECIES REACTIVITY	VALIDATED APPLICATIONS
75-159	Kv2.1 K+ Channel (External)	K39/25	Human, Mouse, Rat	ICC, WB
75-315	Kv2.1 K+ Channel Subunit ☒	L80/21	Human, Mouse, Rat	IHC, ICC, WB
73-339	Kv2.1 K+ Channel Subunit	L83/11	Rat	ICC, WB
75-015	Kv2.2 K+ Channel ☒	K37/89	Human, Mouse, Rat	IHC, IP, WB
75-358	Kv2.2 K+ Channel ☒	N372C/51	Mouse, Rat	IHC, ICC, WB
75-360	Kv2.2 K+ Channel ☒	N372B/60	Mouse, Rat	IHC, ICC, WB
75-369	Kv2.2 K+ Channel ☒	N372B/1	Human, Mouse, Rat	IHC, ICC, WB
75-041	Kv3.1B K+ Channel	N16B/8	Human, Mouse, Rat	IHC, WB
75-397	Kv3.2 K+ Channel ☒	N410/17	Human, Mouse, Rat	IHC, ICC, WB
75-354	Kv3.3 K+ Channel	N375/67	Human, Mouse, Rat	IHC, ICC, WB
75-112	Kv3.4 K+ Channel	N72/16	Human, Mouse, Rat	IHC, IP, WB
75-016	Kv4.2 K+ Channel ☒	K57/1	Mouse, Rat	IHC, IP, WB
75-361	Kv4.2 K+ Channel ☒	L28/4	Human, Mouse, Rat	IHC, ICC, WB
75-017	Kv4.3 K+ Channel ☒	K75/41	Human, Mouse, Rat	IHC, IP, WB
75-504	Kv4.3 K+ Channel Subunit	K75/30	Human, Mouse, Rat	WB, IHC, ICC
75-490	Kv6.1 K+ Channel	N474/27	Mouse	ICC
75-458	Kv6.4 K+ Channel	N458/10	Mouse, Rat	ICC, WB
75-081	Kv7.1/KCNQ1 K+ Channel	N37A/10	Human, Mouse, Rat	IHC, IP, WB
73-079	Kv7.2/KCNQ2 K+ channel	N26A/23	Human, Mouse, Rat	WB
75-082	Kv7.4/KCNQ4 K+ Channel	N43/6	Human, Mouse, Rat	ICC, IP, WB
75-435	Kv8.2 K+ Channel	N448/88	Mouse	ICC, WB
75-450	Kv9.1 K+ Channel	N461/19	Mouse, Rat	ICC, WB



☒ Knockout validated • Trial sizes available

CATALOG #	TARGET PROTEIN	CLONE	SPECIES REACTIVITY	VALIDATED APPLICATIONS
75-459	Kv9.2 K+ Channel	N460/19	Mouse, Rat	IHC, WB
75-106	(Pan)-Kvbeta K+ Channel	K40/17	Human, Mouse, Rat	ICC, WB
75-392	(Pan)-Kvbeta K+ Channel	K25/73	Human, Mouse, Rat	IHC, ICC, WB
75-018	Kvbeta1.1 K+ Channel ☒	K9/40	Human, Mouse, Rat	IHC, IP, WB
75-019	Kvbeta1.2 K+ Channel ☒	K47/42	Human, Mouse, Rat	IHC, IP, WB
75-021	Kvbeta2 K+ Channel ☒	K17/70	Human, Mouse, Rat	IHC, IP, WB
75-362	KA2 Kainate Receptor ☒	N279B/27	Mouse, Rat	IHC, ICC, WB
75-013	KCC2	N1/12	Human, Mouse, Rat	IHC, IP, WB
75-050	KCC2	N1/66	Human, Mouse, Rat	IHC, ICC, WB
75-056	KCNU1/Slo3 pH-Sensitive Maxi-K+ Channel ☒	N2/16	Mouse	ICC, WB
75-167	Keyhole Limpet Hemocyanin (KLH)	N132A/12	N/A	ELISA
75-333	Kirrel3 Short And Long	N321C/49	Mouse, Rat	ICC, WB
75-282	Kirrel3 Short Isoform 3	N320/48	Mouse	IHC, ICC, WB
75-222	Laforin	N84/37	Human	ICC, WB
75-193	LAR/PTPRF (Receptor-Type Tyrosine-Protein Phosphatase)	N165/38	Human, Mouse, Rat	ICC, WB
75-307	Lgi1 ☒	N283/7	Human, Mouse, Rat	IHC, ICC, WB
75-241	Lhx6.1	N228A/16	Mouse	ICC, WB
75-182	LRP4 (Cytoplasmic)	N164/6	Mouse, Rat	ICC, WB
75-221	LRP4 (Extracellular)	N207/27	Mouse, Rat	ICC, WB
75-347	LRRK1 ☒	N341/12	Human, Mouse	ICC, WB
75-253	LRRK2/Dardarin, C-Terminus ☒	N241A/34	Human, Mouse, Rat	IHC, ICC, WB



☒ Knockout validated • Trial sizes available

CATALOG #	TARGET PROTEIN	CLONE	SPECIES REACTIVITY	VALIDATED APPLICATIONS
75-188	LRRK2/Dardarin, N-Terminus ☒	N138/6	Human, Mouse, Rat	ICC, WB
75-308	LRRK2/Dardarin, N-Terminus ☒	8G10	Human, Mouse, Rat	IHC, ICC, WB
75-266	LRRK2/Dardarin, N3 (Non-Mouse-Reactive) ☒	N231B/34	Human, Mouse, Rat	IHC, ICC, WB
75-309	LRRK2/Dardarin-pSer910	1D8	Human, Mouse	ELISA, WB
75-364	LRRTM2 ☒	N209C/35	Human, Mouse, Rat	IHC, ICC, WB
75-261	LRRTM4	N205B/22	Human, Mouse, Rat	ICC, WB
75-227	Mad3	N129A/6	Human, Mouse	ICC, WB
75-250	Mad3 (Human)	N129/15	Human	ICC, WB
75-029	(Pan)-MAGUK	K28/86	Human, Mouse, Rat, Xenopus, Zebrafish	IP, WB
75-128	Malin	N85/18	Human	ICC, WB
75-165	Maltose Binding Protein (MBP)	N128A/4	N/A	ELISA, WB
75-355	MAP3K12 ☒	N377/20	Mouse, Rat	IHC, ICC, WB
73-356	MAP3K12 ☒	N377/83	Mouse, Rat	IHC, ICC, WB
75-273	MECP2	N227/21	Human, Mouse, Rat	DB, IHC
75-129	MESD	N88/12	Human, Mouse, Rat	IHC, IP, WB
75-366	MFF ☒	N382/14	Human, Mouse, Rat	IHC, ICC, WB
73-373	MFF (Exon 1) ☒	N382/69	Human, Mouse, Rat	IHC, ICC, WB
73-209	MGL	N90/20	Mouse, Rat	ICC, WB
75-115	mGluR1/5 (Group I) Glutamate Receptor	N75/3	Human, Mouse, Rat	IHC, IP, WB
75-116	mGluR1/5 (Group I) Glutamate Receptor	N75/33	Human, Mouse, Rat	IHC, IP, WB
75-365	Miro2	N384/63	Human, Rat	IHC, ICC, WB



Knockout validated • Trial sizes available

CATALOG #	TARGET PROTEIN	CLONE	SPECIES REACTIVITY	VALIDATED APPLICATIONS
75-469	MIRP4	N472/88	Human, Mouse, Rat	ICC, WB
75-162	Mitofusin-1	N111/24	Mouse, Rat	ICC, WB
75-173	Mitofusin-2	N153/5	Mouse, Rat	IHC, ICC, WB
75-239	MMACHC	N230/21	Human, Mouse	ICC, WB
75-100	MMP9	L51/82	Human, Mouse, Rat	IHC, IP, WB
75-412	MOG	L94/54	Rat	IHC, ICC
75-127	Mortalin/GRP75	N52A/42	Human, Mouse, Rat	IHC, IP, WB
75-154	MPP8	N119/44	Human	ICC, WB
75-405	(Pan)-Nav1 Na+ Channel	N419/40	Human, Mouse, Rat	IHC, ICC, WB
75-407	(Pan)-Nav1 Na+ Channel	N419/78	Human, Mouse, Rat	IHC, ICC, WB
75-023	Nav1.1 Na+ Channel	K74/71	Human, Mouse, Rat	IHC, IP, WB
75-024	Nav1.2 Na+ Channel	K69/3	Human, Mouse, Rat	IHC, IP, WB
75-424	Nav1.4 Na+ Channel	N255/38	Rat	IHC, ICC, WB
73-382	Nav1.5 Na+ Channel	N397/19	Human, Mouse, Rat	ICC, WB
75-026	Nav1.6 Na+ Channel	K87A/10	Human, Mouse, Rat	IHC, IP
75-103	Nav1.7 Na+ Channel	N68/6	Human, Mouse, Rat	IHC, IP, WB
75-166	Nav1.8 Na+ Channel	N134/12	Human, Mouse, Rat	IHC, ICC, WB
75-425	Navbeta1 Na+ Channel	N405/74	Mouse, Rat	IHC, ICC
75-379	Navbeta2 Na+ Channel	N395/68	Mouse, Rat	IHC, ICC, WB
75-391	Navbeta3 Na+ Channel	N396/29	Mouse, Rat	ICC, WB
75-198	Navbeta4 Na+ Channel	N168/6	Mouse, Rat	IHC, ICC, WB
75-220	NALCN	N185/7	Mouse, Rat	ICC, WB



Knockout validated • Trial sizes available

CATALOG #	TARGET PROTEIN	CLONE	SPECIES REACTIVITY	VALIDATED APPLICATIONS
75-404	NCKX4	N414/25	Human, Rat	IHC, ICC, WB
75-226	Neuregulin-CRD (Cysteine-Rich Domain, Type II)	N126B/31	Human, Rat	ICC, WB
75-225	Neuregulin-HBD (Heparin Binding Domain, Type I/II)	N120A/9	Human	ICC
73-217	Neurexin-1-Beta (Blotting)	N170A/26	Human, Mouse	ICC, WB
75-216	Neurexin-1-Beta (Staining)	N170A/1	Human, Mouse	ICC, WB
75-027	(Pan)-Neurofascin	L11A/41	Human, Rat	IHC, WB
75-172	(Pan)-Neurofascin (Extracellular)	A12/18	Human, Rat	IHC, IP, WB
75-160	Neuroigin-1	N97A/31	Mouse, Rat	IHC, ICC, WB
75-451	Neuroigin-2	L107/39	Human, Mouse	IHC, ICC, WB
75-158	Neuroigin-3	N110/29	Human, Mouse	IHC, ICC, WB
75-138	Neuroigin-4*	N98/7	Mouse	ICC, WB
75-141	Neuroigin-4*	N98/47	Mouse	ICC, WB
75-456	Neuropeptide Y	L115/13	Human, Mouse, Rat	AT, IHC, ICC
75-108	NGL-1/LRRC4C	N49A/21	Human, Mouse, Rat	IP, WB
75-084	NGL-2/LRRC4	N50/36	Mouse, Rat	ICC, WB
75-085	NGL-3/LRRC4B	N51/6	Mouse, Rat	ICC, IP, WB
75-229	NKCC1	N161/20	Human, Mouse, Rat	DB
75-480	nNOS/NOS1	L121/25	Human, Mouse, Rat	AT, IHC, WB
75-481	nNOS/NOS1	L121/42	Human, Mouse, Rat	IHC, WB
75-295	Notch1	N253/32	Mouse, Rat	ICC, WB
75-395	Npas4	N408/62	Mouse, Rat	IHC, ICC, WB



Knockout validated • Trial sizes available

CATALOG #	TARGET PROTEIN	CLONE	SPECIES REACTIVITY	VALIDATED APPLICATIONS
75-396	Npas4	N408/79	Mouse, Rat	IHC, ICC, WB
75-460	NPY2R	L119/106	Human, Mouse, Rat	IHC, WB
73-303	NR2A Glutamate Receptor	N327A/38	Human, Mouse, Rat	IHC, WB
75-325	NrCAM	N343/26	Mouse, Rat	ICC, WB
75-280	NSD1	N312/10	Human	ICC, WB
75-322	NSD3	N348/82	Human, Mouse, Rat	IHC, ICC, WB
75-215	OCRL/INPP5b	N166A/26	Human, Mouse, Rat	ICC, WB
75-180	Olig1	N149/25	Mouse	ICC, WB
75-042	Pancortin 	K96/7	Human, Mouse, Rat	IHC, ICC, WB
75-212	Pannexin-2	N121A/1	Rat	IHC, WB
75-213	Pannexin-2	N121A/31	Rat	IHC, WB
75-195	PARIS/ZNF746	N196/16	Human, Mouse, Rat	IHC, ICC, WB
75-455	Parvalbumin	L114/3	Mouse, Rat	IHC, ICC, WB
75-479	Parvalbumin	L114/81	Mouse, Rat	AT, IHC, WB
75-285	PEX6	N233/8	Human, Rat	ICC, WB
75-256	PEX7	N232/9	Human	ICC, WB
73-291	Phosphoserine-2-OEt	N257/25	N/A	DB
73-292	Phosphoserine-2-OH	N259/48	N/A	DB
73-293	Phosphoserine-2-OMe	N262/16	N/A	DB
75-238	PhyH/PAHX	N210/5	Human, Mouse, Rat	ICC, WB
75-040	PICK1 	L20/8	Human, Mouse, Rat	IHC, IP, WB
73-346	PINK1	N357/6	Human, Mouse, Rat	ICC, WB



☒ Knockout validated • Trial sizes available

CATALOG #	TARGET PROTEIN	CLONE	SPECIES REACTIVITY	VALIDATED APPLICATIONS
75-060	Pink1 PTEN Induced Putative Kinase 1	N4/15	Human, Mouse, Rat	IHC, WB
75-061	Pink1 PTEN Induced Putative Kinase 1	N4/49	Human	IHC, WB
75-474	Proser1	N456/39	Human, Mouse, Rat	ICC, WB
75-178	(Pan)-Gamma-Protocadherin-A ☒	N144/32	Mouse	WB
75-185	(Pan)-Gamma-Protocadherin-Constant ☒	N159/5	Mouse	IHC, WB
75-177	Gamma-Protocadherin-A3 ☒	N144/17	Mouse	ICC, WB
75-184	Gamma-Protocadherin-B2 ☒	N148/30	Mouse	ICC, WB
75-237	Gamma-Protocadherin-C3	N174B/27	Mouse	ICC, WB
75-231	Gamma-Protocadherin-C4	N193A/13	Mouse	ICC, WB
75-028	PSD-95 ☒	K28/43	Human, Mouse, Rat	IHC, IP, WB
75-348	PSD-95 MAGUK Scaffold Protein ☒	K28/74	Human, Mouse, Rat	AT, IHC, ICC, WB
75-194	(Pan)-PTPR (Receptor-Type Tyrosine-Protein Phosphatase)	N165/43	Human, Mouse, Rat	ICC, WB
75-168	(Pan)-QKI	N147/6	Human, Mouse, Rat	IHC, ICC, WB
75-232	QKI-5	N195A/16	Human, Mouse, Rat	IHC, ICC, WB
75-190	QKI-6	N182/17	Human, Mouse	IHC, ICC, WB
75-200	QKI-7	N183/15	Human, Mouse	IHC, ICC, WB
73-274	QKI-7b	N194/11	Human, Rat	IHC, ICC
75-234	RBM17/SPF45	N219/5	Human, Mouse, Rat	IHC, ICC, WB
75-368	REEP	N326D/13	Mouse, Rat	IHC, ICC, WB
75-313	REEP1	N345/51	Mouse, Rat	IHC, ICC, WB
73-370	REEP1/2	N326D/29	Mouse, Rat	IHC, ICC, WB
73-367	REEP2	N326D/2	Mouse, Rat	IHC, ICC, WB



Knockout validated • Trial sizes available

CATALOG #	TARGET PROTEIN	CLONE	SPECIES REACTIVITY	VALIDATED APPLICATIONS
75-286	Rem2	N324/2	Mouse, Rat	IHC, ICC, WB
75-170	RGS14	N133/21	Mouse, Rat	IHC, ICC, WB
75-422	RGS14	N133/35	Human, Mouse, Rat	IHC, ICC, WB
75-499	Rufy3	N483/84	Human, Mouse, Rat	WB, IHC, ICC
75-500	Rufy3	N483/126	Human, Mouse, Rat	WB, IHC, ICC
75-503	Rufy3	N483/26	Human, Mouse, Rat	WB, IHC, ICC
73-352	S-Tag	N56/9	N/A	ELISA, WB
75-199	S100A5	N176/35	Mouse, Rat	ICC, WB
75-121	SALM2/LRFN1	N52B/27	Human, Mouse, Rat	IHC, ICC, WB
75-192	SALM5/LRFN5	N140A/12	Mouse	IHC, ICC, WB
75-058	SAP102	N19/2	Human, Mouse, Rat	IHC, IP, WB
75-030	SAP97	K64/15	Human, Mouse, Rat	IHC, IP, WB
75-156	(Pan)-SAPAP	N127/31	Human, Mouse, Rat	IHC, ICC, WB
75-466	SAPAP1	N238/29	Human, Mouse, Rat	ICC, WB
75-468	SAPAP1	N238/30	Human, Mouse, Rat	IHC, ICC
75-236	SAPAP1/2	N238/31	Human, Mouse, Rat	ICC, WB
73-467	SAPAP2	N459/84	Human, Mouse, Rat	IHC, WB
75-502	SAPAP3	L126/93	Mouse, Rat	WB, IHC, ICC
75-063	SCG10/Stathmin-2	L5/1	Human, Mouse, Rat	IHC, IP
75-049	SH3GL1/Endophilin A2	K51/1	Rat	IHC, IP, WB
75-089	(Pan)-Shank	N23B/49	Human, Mouse, Rat	IHC, IP, WB
75-064	Shank1	N22/21	Human, Mouse, Rat	IHC, WB



☒ Knockout validated • Trial sizes available

CATALOG #	TARGET PROTEIN	CLONE	SPECIES REACTIVITY	VALIDATED APPLICATIONS
75-343	Shank1 And Shank3	N367/51	Mouse, Rat	IHC, ICC, WB
75-088	Shank2	N23B/6	Human, Mouse, Rat	IHC, IP, WB
75-109	Shank3	N69/46	Human, Mouse, Rat	IHC, IP, WB
75-344	Shank3	N367/62	Mouse, Rat	IHC, ICC, WB
75-403	SK2 potassium channel	K78/29	Human, Mouse, Rat	IHC, ICC, WB
75-436	Slc18a2/VMAT2	N449/73	Human, Mouse, Rat	ICC, WB
75-022	Slo1 Maxi-K+ Channel ☒	L6/60	Human, Mouse, Rat, Zebrafish	IHC, IP, WB
75-408	Slo1/BKAlpha Potassium Channel ☒	L6/23	Mouse, Rat	IHC, ICC, IP, WB
75-421	Slo1/BKAlpha Potassium Channel ☒	L6/48	Mouse, Rat	IHC, ICC, WB
75-055	Slo2.1/Slick K+ Channel ☒	N11/33	Mouse, Rat	IHC, WB
75-051	Slo2.2/Slack K+ Channel ☒	N3/26	Human, Mouse, Rat	IHC, WB
75-045	Snapin/SNAPAP	L8/15	Human, Mouse, Rat	IHC, IP, WB
75-152	SNAT1	N104/32	Human, Mouse, Rat	IHC, ICC, WB
75-155	SNAT1	N104/37	Human, Mouse, Rat	ICC, WB
75-505	SST/Somatostatin	L111/118	Human, Mouse, Rat	IHC, ICC
75-374	Beta1-Spectrin	N385/21	Human, Mouse, Rat	IHC, ICC, WB
73-376	Beta4-Spectrin	N393/2	Human, Mouse, Rat	IHC, ICC, WB
75-377	Beta4-Spectrin	N393/76	Human, Mouse, Rat	IHC, ICC, WB
75-337	Stonin-2 ☒	N346/9	Human, Mouse, Rat	IHC, ICC, WB
75-267	SUR1 ☒	N289/16	Hamster, Mouse, Rat	IHC, ICC, WB
75-298	SUR1 and SUR2B	N323A/31	Mouse, Rat	ICC, WB
75-296	SUR2A ☒	N319A/14	Mouse, Rat	IHC, ICC, WB



Knockout validated • Trial sizes available

CATALOG #	TARGET PROTEIN	CLONE	SPECIES REACTIVITY	VALIDATED APPLICATIONS
73-399	SUR2B	N323B/20	Human, Mouse, Rat	IHC, ICC, WB
73-332	SVOP	N356/9	Mouse, Rat	IHC, ICC, WB
75-353	SVOP	N356/23	Mouse, Rat	ICC, WB
75-497	Synapsin-1/3	L125/129	Human, Mouse, Rat	IHC, WB
75-494	Synapsin-3	L125/121	Human, Mouse, Rat	IHC, WB
75-262	Synaptotagmin-10	N269/73	Mouse, Rat	IHC, ICC, WB
75-304	Synaptotagmin-12	N277/7	Mouse, Rat	IHC, ICC, WB
75-269	Synaptotagmin-3	N278/19	Human, Mouse, Rat	ICC, WB
75-305	Synaptotagmin-5	N274/8	Mouse, Rat	IHC, ICC, WB
75-271	Synaptotagmin-6	N270/47	Human, Mouse, Rat	ICC, WB
75-265	Synaptotagmin-7	N275/14	Mouse, Rat	IHC, ICC, WB
75-306	Synaptotagmin-9	N276A/15	Human, Mouse, Rat	IHC, ICC, WB
75-120	SynCAM1	L45/30	Human, Mouse, Rat	ICC, WB
75-247	SynCAM4	N244/5	Human, Mouse, Rat	ICC, WB
75-251	SynDIG1/Tmem90b	L42/17	Human, Mouse, Rat	ICC, WB
75-186	SynDIG3/Tmem91	N160/21	Mouse, Rat	IHC, ICC, WB
75-409	SynDIG4	L102/45	Human, Mouse, Rat	IHC, ICC, WB
75-197	Tafazzin	N173B/13	Human	ICC, WB
75-461	TALK1 Potassium Channel	N466/14	Mouse, Rat	IHC, ICC
75-252	TARPGamma2/4/8	N245/36	Mouse, Rat	ICC, WB
75-242	TARPGamma2/Stargazin	N245/1	Mouse, Rat	ICC, WB
75-357	TASK1 Potassium Channel	N374/48	Mouse, Rat	IHC, ICC, WB



☒ Knockout validated • Trial sizes available

CATALOG #	TARGET PROTEIN	CLONE	SPECIES REACTIVITY	VALIDATED APPLICATIONS
75-191	Tauro-GM2	N175/9	N/A	ELISA
75-310	THAP1	N325B/65	Human	ICC, WB
75-462	THIK-2	N468/37	Mouse, Rat	IHC, ICC
75-258	Thioredoxin	N245/44	N/A	ELISA, WB
75-157	Thorase/Atad1 ☒	N125/10	Human, Mouse, Rat	IHC, ICC, WB
73-389	(Pan)-Thyroid Hormone Receptor	N403/63	Human, Mouse, Rat	IHC, ICC, WB
73-386	Thyroid Hormone Receptor Beta1	N402/13	Human, Mouse, Rat	ICC, WB
75-387	Thyroid Hormone Receptor Beta1	N402/46	Human, Mouse, Rat	IHC, ICC, WB
75-512	TMEM119	L128/43	Mouse	IHC, ICC, WB
75-433	TRAAK Potassium Channel	N445/27	Mouse, Rat	IHC, ICC
75-371	TRAK1	N389/9	Human, Rat	IHC, ICC, WB
75-375	TRAK2	N390/43	Human, Rat	IHC, ICC, WB
75-475	TRESK	N467/1	Mouse, Rat	IHC, WB
75-243	TRIP8b (Constant) ☒	N212/7	Human, Mouse, Rat	IHC, ICC, WB
75-244	TRIP8b (Constant) ☒	N212/17	Human, Mouse, Rat	IHC, ICC, WB
75-334	TRIP8B (Exon 1A/5 Junction) ☒	N291C/22	Mouse, Rat	ICC, WB
75-245	TRIP8b (Exon 1b) ☒	N212A/34	Human, Mouse, Rat	ICC, WB
75-208	TRIP8b (Exon 4) ☒	N212/3	Human, Mouse, Rat	ICC, WB
75-278	TrpC1 ☒	1F1	Human, Mouse, Rat	ICC, WB
75-119	TrpC4	N77/15	Human, Mouse, Rat	IHC, ICC, IP, WB
75-104	TrpC5 ☒	N67/15	Human, Mouse, Rat	IHC, IP, WB
75-123	TrpC7	N64A/36	Human, Mouse, Rat	IHC, IP, WB



Knockout validated • Trial sizes available

CATALOG #	TARGET PROTEIN	CLONE	SPECIES REACTIVITY	VALIDATED APPLICATIONS
75-464	TrpM6	N470/22	Human	WB
75-114	TrpM7 Ion Channel And Ser/Thr Kinase	N74/25	Mouse, Rat	ICC, IP, WB
75-283	TRPML3/Mucolipin-3	N268/19	Human, Mouse, Rat	WB
75-254	TrpV1	N221/17	Mouse, Rat	IHC, ICC, WB
73-255	TrpV1	N221/12	Mouse, Rat	IHC, ICC, WB
75-043	TrpV3	N15/4	Human, Mouse, Rat	ICC, IP, WB
75-070	TrpV3	N15/39	Human, Mouse, Rat	ICC, IP, WB
75-463	TWIK-2	N469/28	Mouse	ICC, WB
76-700	Tyrosine Hydroxylase (Ascites)	LNC1	Chicken, Frog, Human, Lizard, Monkey, Mouse, Rat, Vole, Zebrafish	WB, ICC, IHC, IP
77-700	Tyrosine Hydroxylase (Purified)	LNC1	Chicken, Frog, Human, Lizard, Monkey, Mouse, Rat, Vole, Zebrafish	WB, ICC, IHC, IP
75-205	Uncx	N155/9	Mouse	ICC, WB
75-020	VaChT	N6/38	Human, Mouse, Rat	IHC
75-429	VACHT	N425/45	Mouse, Rat	IHC, ICC
75-495	VAPA	N479/22	Mouse, Rat	IHC, WB
75-498	VAPA	N479/12	Mouse, Rat	IHC, WB
75-496	VAPA/B	N479/107	Mouse, Rat	IHC, WB
75-204	VDAC1	N152B/23	Human, Mouse, Rat	IHC, ICC, WB
75-323	Versican	N351/23	Mouse, Rat	ICC, WB
75-324	Versican	N351/24	Mouse, Rat	ICC, WB
75-457	VGAT	L118/80	Mouse, Rat	IHC, ICC, WB
73-478	VGAT	L118/66	Mouse, Rat	AT, IHC, ICC, WB

Distributed by:

CliniSciences Group



antibodies inc

☒ Knockout validated • Trial sizes available

CATALOG #	TARGET PROTEIN	CLONE	SPECIES REACTIVITY	VALIDATED APPLICATIONS
75-066	VGlut1	N28/9	Human, Mouse, Rat	IHC, ICC, WB
75-067	VGlut2	N29/29	Mouse, Rat	IHC, ICC, WB
75-073	VGlut3	N34/34	Mouse, Rat	IHC, WB
75-447	VIP	L108/92	Human, Rat	IHC
75-430	VMAT1	N440/21	Mouse, Rat	IHC, ICC, WB
75-431	VMAT1	N440/61	Mouse, Rat	IHC, ICC
75-485	VSP/TPTE	N432/21	Chicken, Xenopus, Zebrafish	WB
75-486	VSP/TPTE	N432/63	Chicken, Xenopus, Zebrafish	WB
75-048	WAVE1/SCAR ☒	K91/36	Human, Mouse, Rat	IHC, IP, WB
73-378	WNK1 ☒	N391/68	Rat	IHC, ICC, WB
75-423	WRN	N428/12	Human, Rat	IHC, ICC, WB
75-312	Zebrafish PSD Marker	N286/74	Zebrafish	IHC, ICC, WB
75-099	Zinedin	K88/64	Rat	IHC, IP, WB
75-487	ZIP3	N476/9	Mouse	IHC, WB
73-336	ZNF423 ☒	N328B/37	Human, Mouse	IHC, ICC, WB



Fit-For-Purpose Custom Antibodies!

Antibody solutions tailored to meet your needs

MONOCLONAL ANTIBODIES

- ◆ Optimized platform to guide selection of immunogen, immunization schedule, and hybridoma screening approach
- ◆ NOT “one-size-fits-all”: Project customized to meet your individual requirements
- ◆ Broad utility as therapeutics, diagnostic tools, and research reagents

POLYCLONAL ANTIBODIES

- ◆ Multiple options for antibody host — chicken, rabbit, goat, alpaca, guinea pig
- ◆ Guidance from our expert Antibody Development Group every step of the way
- ◆ Comprehensive development process including immunogen selection, immunization schedule, ELISA reports, and purification

IMMUNOASSAY SERVICES

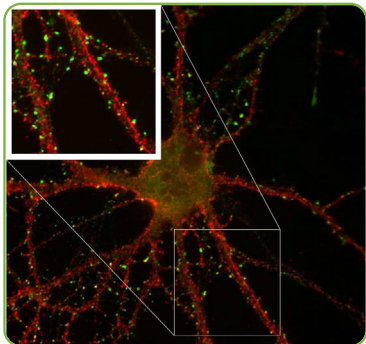
- ◆ ISO-13485 certified IVD manufacturer
- ◆ Antibody pair development and screening for IVD
- ◆ Antibody production/purification
- ◆ ELISA formatting
- ◆ Control slide production

ANTIBODY PRODUCTION AND CONJUGATION

- ◆ Hybridoma mAb scale-up (*in vitro* bioreactor)
- ◆ Antibody conjugation (Biotin, FITC, HRP)
- ◆ Antibody purification (protein A/G, affinity purification)



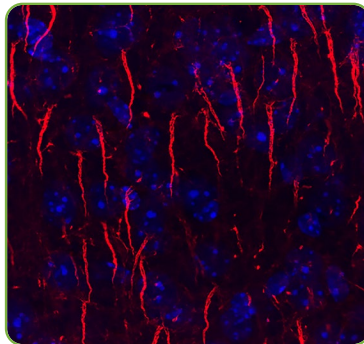
Featured Products



Anti-PSD95

- Species: Human, Mouse, Rat
- Applications: IHC, IP, WB

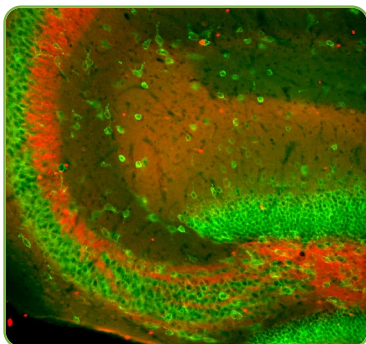
Immunofluorescence staining of PSD95 in cultured rat hippocampal neurons with (Catalog #75-028, green) and Kv4.2 (Catalog #75-016, red).



Anti-Ankyrin-G

- Species: Human, Mouse, Rat
- Applications: IHC, ICC

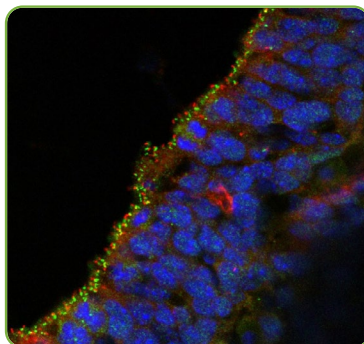
Immunofluorescence labeling of Ankyrin G in axon initial segments of adult rat cortex (Catalog #75-147, red) and Hoechst nuclear stain (blue).



Anti-Slo1 Maxi-K+ Channel

- Species: Human, Mouse, Rat, Zebrafish
- Applications: IHC, IP, WB

Immunofluorescence staining of hippocampal CA3 of adult Slo1 (Catalog #75-022, red) and Kv2.1 rabbit polyclonal (green).



Anti-Arl13b

- Species: Human, Mouse, Rat, Zebrafish
- Applications: IHC, IP, WB

Immunofluorescence of the ventricular zone of E14 mouse brain (frozen section) labeled with Anti-Arl13b (red, Cat #75-287, 1:1000) and CEP152 (Green). The blue is DAPI staining of nuclear DNA.

CliniSciences Group

Austria

Company: CliniSciences GmbH
Address: Sternwartestrasse 76, A-1180
Wien - Austria
Telephone: +43 720 115 580
Fax: +43 720 115 577
Email: oesterreich@clinisciences.com
Web: <https://www.clinisciences.com>



Belgium

Company: CliniSciences S.R.L.
Address: Avenue Stalingrad 52, 1000
Brussels - Belgium
Telephone: +32 2 31 50 800
Fax: +32 2 31 50 801
Email: belgium@clinisciences.com
Web: <https://www.clinisciences.com>



Denmark

Company: CliniSciences ApS
Address: Oesterbrogade 226, st. 1,
Copenhagen, 2100 - Denmark
Telephone: +45 89 888 349
Fax: +45 89 884 064
Email: denmark@clinisciences.com
Web: <https://www.clinisciences.com>



Finland

Company: CliniSciences ApS
Address: Oesterbrogade 226, st. 1,
Copenhagen, 2100 - Denmark
Telephone: +45 89 888 349
Fax: +45 89 884 064
Email: suomi@clinisciences.com
Web: <https://www.clinisciences.com>



France

Company: CliniSciences S.A.S
Address: 74 Rue des Suisses, 92000
Nanterre- France
Telephone: +33 9 77 40 09 09
Fax: +33 9 77 40 10 11
Email: info@clinisciences.com
Web: <https://www.clinisciences.com>



Germany

Company: Biotrend Chemikalien GmbH
Address: Wilhelm-Mausser-Str. 41-43,
50827 Köln - Germany
Telephone: +49 221 9498 320
Fax: +49 221 9498 325
Email: info@biotrend.com
Web: <https://www.biotrend.com>



Iceland

Company: CliniSciences ApS
Address: Oesterbrogade 226, st. 1,
Copenhagen, 2100 - Denmark
Telephone: +45 89 888 349
Fax: +45 89 884 064
Email: island@clinisciences.com
Web: <https://www.clinisciences.com>



Ireland

Company: CliniSciences Limited
Address: Ground Floor, 71 lower Baggot street
Dublin D02 P593 - Ireland
Telephone: +353 1 6971 146
Fax: +353 1 6971 147
Email: ireland@clinisciences.com
Web: <https://www.clinisciences.com>



Italy

Company: CliniSciences S.r.l
Address: Via Maremmana inferiore 378
Roma 00012 Guidonia Montecelio - Italy
Telephone: +39 06 94 80 56 71
Fax: +39 06 94 80 00 21
Email: italia@clinisciences.com
Web: <https://www.clinisciences.com>



Netherlands

Company: CliniSciences B.V.
Address: Kraaijenhoffstraat 137A,
1018RG Amsterdam, Netherlands
Telephone: +31 85 2082 351
Fax: +31 85 2082 353
Email: nederland@clinisciences.com
Web: <https://www.clinisciences.com>



Norway

Company: CliniSciences ApS
Address: Oesterbrogade 226, st. 1,
Copenhagen, 2100 - Denmark
Telephone: +45 89 888 349
Fax: +45 89 884 064
Email: norge@clinisciences.com
Web: <https://www.clinisciences.com>



Poland

Company: CliniSciences sp.z.o.o.
Address: ul. Rotmistrza Witolda Pileckiego 67
lok. 200 - 02-781 Warszawa -Poland
Telephone: +48 22 307 0535
Fax: +48 22 307 0532
Email: polska@clinisciences.com
Web: <https://www.clinisciences.com>



Portugal

Company: Quimigen Unipessoal LDA
Address: Rua Almada Negreiros, Lote 5, Loja 14,
2615-275 Alverca Do Ribatejo - Portugal
Telephone: +351 30 8808 050
Fax: +351 30 8808 052
Email: info@quimigen.com
Web: <https://www.quimigen.pt>



Spain

Company: CliniSciences Lab Solutions
Address: C/ Hermanos del Moral 13
(Bajo E), 28019, Madrid - Spain
Telephone: +34 91 269 40 65
Fax: +34 91 269 40 74
Email: espana@clinisciences.com
Web: <https://www.clinisciences.com>



Sweden

Company: CliniSciences ApS
Address: Oesterbrogade 226, st. 1,
Copenhagen, 2100 - Denmark
Telephone: +45 89 888 349
Fax: +45 89 884 064
Email: sverige@clinisciences.com
Web: <https://www.clinisciences.com>



Switzerland

Company: CliniSciences Limited
Address: Marktgasse 18 8302 Kloten -
Switzerland
Telephone: +41 (044) 805 76 81
Fax: +41 (044) 805 76 75
Email: switzerland@clinisciences.com
Web: <https://www.clinisciences.com>



UK

Company: CliniSciences Limited
Address: 11 Progress Business center, Whittle
Parkway, SL1 6DQ Slough- United Kingdom
Telephone: +44 (0)1753 866 511
or +44 (0) 330 684 0982
Fax: +44 (0)1753 208 899
Email: uk@clinisciences.com
Web: <https://www.clinisciences.com>



USA

Company: Biotrend Chemicals LLC
Address: c/o Carr Riggs Ingram,
500 Grand Boulevard, Suite 210 Miramar
Beach, FL 32550- USA
Telephone: +1 850 650 7790
Fax: +1 850 650 4383
Email: info@biotrend-usa.com
Web: <https://www.biotrend-usa.com>

